



holder for the lever of the espresso coffee machine



Drexobed

[VIEW IN BROWSER](#)

updated 4. 4. 2024 | published 4. 4. 2024

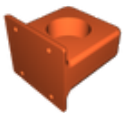
Summary

for all types of levers

[Art & Design](#) > [Wall-mounted](#)

inside of this holder is hole for magnet. so you have to stop the printing and put the magnet inside and then resume the printing proces

Model files



part-studio-1-part-1-33.stl

License ©

This work is licensed under a
[Creative Commons \(International License\)](#)



Public Domain

- ✓ | Sharing without ATTRIBUTION
- ✓ | Remix Culture allowed
- ✓ | Commercial Use
- ✓ | Free Cultural Works
- ✓ | Meets Open Definition