



# BlueSCSI v2 2023.10a Hard Drive Bay Bracket



PotatoFi

[VIEW IN BROWSER](#)

updated 26. 5. 2024 | published 26. 5. 2024

## Summary

A beta version of a hard drive bay bracket for the BlueSCSI v2 2023.10a.

[Hobby & Makers](#) > [Electronics](#)

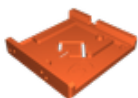
Tags: [bluescsi](#) [bluescsiv2](#)

This is an unfinished, beta version of a bracket to mount a BlueSCSI v2 2023.10a in a vintage Mac! It's not done yet, and I don't have a BlueSCSI v2 2023.10a or a vintage Mac to test it in, so feedback would be welcome!

I'll post source files when the design is locked down and done.

Note that the image is of the previous BlueSCSI v2, which I have designed a bracket for in the past. This bracket is for the 2023.10a.

## Model files



**bluescsi-v2-202310a-rc1.3mf**

☐ RC1 version of the bracket.



## bluescsi-v2-202310a-beta.3mf

☐ Beta version of the bracket.

## License

This work is licensed under a  
**Creative Commons (4.0 International License)**



**Attribution-ShareAlike**

- 
- ✗ | Sharing without ATTRIBUTION
  - ✓ | Remix Culture allowed
  - ✓ | Commercial Use
  - ✓ | Free Cultural Works
  - ✓ | Meets Open Definition