

Filament Guide for 20mm extrusion (Ender 3 variants)



TilenGTR

[VIEW IN BROWSER](#)

updated 1. 4. 2024 | published 1. 4. 2024

Summary

This is a filament guide that clips into any standard 20x20 extrusion.

[3D Printers](#) > [Accessories](#)

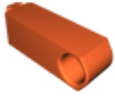
Tags: [upgrade](#) [spoolholder](#) [accessory](#) [guide](#) [modification](#)
[filamentguide](#) [accessories](#) [upgradeender3](#) [upgradeender3v2](#)
[upgradeender3pro](#)

This is a filament guide I made for printing with an external spool holder. It fits on my Ender 3 V2 and is compatible with any 20x20mm extrusion.

This part prevents your gantry from pulling the filament and unrolling the spool while moving in the x direction, if you're feeding from the side like me.

For the best looks, I recommend printing it with no top or bottom layers and 10% triangular or hexagonal infill. The part is designed to be printed without any supports.

Model files



filament_guide_e3v2.stl

License ©

This work is licensed under a
GNU



General Public License v2.0

-
- ✗ | Sharing without ATTRIBUTION
 - ✓ | Remix Culture allowed
 - ✓ | Commercial Use
 - ✓ | Meets Open Definition
 - i | Share under the same license