



Power Strip Flange



SolidWorks Maker

[VIEW IN BROWSER](#)

updated 27. 3. 2023 | published 27. 3. 2023

Summary

A simple support for your power strip.



9.98 hrs



2 pcs



0.15 mm



0.40 mm



PLA



82 g



Prusa MINI /
MINI+

[Household](#) > [Outdoor & Garden](#)

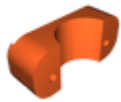
Tags: [power](#) [strip](#) [flange](#) [powerswitch](#) [powerstrip](#)
[powerstripmount](#) [powerstripholder](#) [powerstripflange](#)

A simple support so that you can fix your power strip to a Ø38.5mm bar (Ø1.52 inches). You will just need four M4 (4x0.7mm) threaded inserts and four M4x40mm screws. It is very simple to mount and adapts perfectly to the following power strip model:

Un simple soporte para que puedas fijar tu regleta de corriente a una barra de Ø38.5mm (Ø1.52 pulgadas). Solo necesitarás 4 insertos roscados de métrica M4(4x0.7mm) y cuatro tornillos de métrica M4x40mm. Es muy sencilla de instalar y se adapta perfectamente al siguiente modelo de regleta de corriente:

BASE MULTIPLE INDUSTRIAL 3 TOMAS CON INTERRUPTOR CON CABLE 3X1.5MM2 1.5 METROS IP44

Model files



brida-superior-1.3mf



brida-superior-2.3mf



brida-inferior-1.3mf



brida-inferior-2.3mf



brida-cable.3mf

Print files



brida-regleta-terraza_015mm_pla_mini_9h10m.gcode

🌀 PLA 🌀 0.40 mm ≡ 0.15 mm ⌚ 9.16 hrs ⚖️ 76 g 🖨️ Prusa MINI / MINI+



brida-cable_015mm_pla_mini_49m.gcode

🌀 PLA 🌀 0.40 mm ≡ 0.15 mm ⌚ 0.82 hrs ⚖️ 6 g 🖨️ Prusa MINI / MINI+

License

This work is licensed under a
GNU



General Public License v3.0

- ✗ | Sharing without ATTRIBUTION
- ✓ | Remix Culture allowed
- ✓ | Commercial Use
- ✓ | Meets Open Definition
- i | Share under the same license