



## SUP Cup Holder



RadDesign

[VIEW IN BROWSER](#)

updated 2. 4. 2024 | published 2. 4. 2024

## Summary

Cup holder for iROCKER Nautical SUP. It should fit any paddle board that has a M8 threaded mount.

[Sports & Outdoor](#) > [Outdoor Sports](#)

Tags: [cup](#) [accessory](#) [cupholder](#) [standuppaddleboard](#) [sup](#)

## SUP Cup Holder

Paddle the open water while your drink rests safely in the SUP Cup Holder! This is designed for the iROCKER Nautical SUP which has M8 threaded attachments. I designed it to fit a can with or without a stainless steel can sleeve. It will also fit most water bottles. I'm providing the STEP files so it can be edited to your needs.

### Additional Parts

- 1x 20mm M8-1.25 Hex Cap Bolt

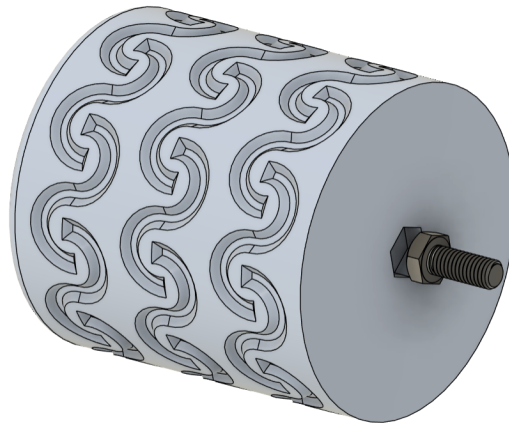
### Print Instructions

Print in PETG or some other water resistant filament that can remain in direct sunlight. Print without supports using settings that work well for

your printer. The STL and STEP files are aligned in the best orientation for printing.

### **Build Instructions**

Dry fit the bolt in the hex shaped hole of the cup holder. Apply glue to this hole and insert the bolt.



Once the glue sets, apply glue to the flat faces of the cup holder and cup holder base and thread the bolt through the base until the two pieces are flush.



## Model files



**STEP**

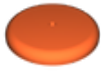
2 files

**cup-holder.step**

**cup-holder-base.step**



**cup-holder.stl**



cup-holder-base.stl

## License ©

This work is licensed under a  
[Creative Commons \(4.0 International License\)](#)



**Attribution-NonCommercial**

---

- ✗ | Sharing without ATTRIBUTION
- ✓ | Remix Culture allowed
- ✗ | Commercial Use
- ✗ | Free Cultural Works
- ✗ | Meets Open Definition