

MutliConnect Small T-Bolt Connector

 **RealLango**

[VIEW IN BROWSER](#)

updated 9. 4. 2024 | published 9. 4. 2024

Summary

Remix of the MultiConnect connector used for the small threaded holes.

[Hobby & Makers](#) > [Organizers](#)

Tags: [multiboard](#) [multiconnect](#)

The MultiConnect system is a nice addition to the MultiBoard system. It allows for great versatility in positioning while allowing for a clean look. I found that the small threaded head did not give enough support for a project I was working on. Also it was weak and I broke some of them just trying to screw them into the board. So I created 5 models to help resolve this issue.

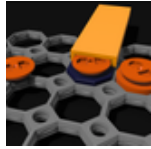
Part B is a modified tbolt that has a smaller head allowing it to fit in the MultiConnect head without compromising strength.

The 4 Part A models give you the option to have the standard small base or a larger base for more stability when you have the clearance available. It also have the option for the MultiTool compatible or standard version.

I printed these on a Elegoo Neptune 3 using PLA and supports were only needed for the small base version.

Update: I corrected the sizing on a few parts so they should now match the multiconnect project correctly.

This remix is based on



MultiConnect - generic connector for your board

by David D

Model files

multiconnect-small-tbolt-small_base-part-a.step

multiconnect-small-tbolt-large_base-part-a.step

multiconnect-small-tbolt-large_base-part-a-multitool .step

multiconnect-small-tbolt-small_base-part-a-multitool .step

multiconnect-small-tbolt-part-b.step

License ©



This work is licensed under a
Creative Commons (4.0 International License)

Attribution—Noncommercial—Share Alike

- ✗ | Sharing without ATTRIBUTION
- ✓ | Remix Culture allowed
- ✗ | Commercial Use
- ✗ | Free Cultural Works
- ✗ | Meets Open Definition