

# Fatshark Cloverleaf Antenna Cover

**M** Matthias Kesenheimer

[VIEW IN BROWSER](#)

updated 12. 4. 2022 | published 24. 10. 2021

## Summary

This is a cover for a common cloverleaf antenna. Mostly used for FPV racing antennas. Snaps right onto the antenna...

[Hobby & Makers](#) > [RC & Robotics](#)

This is a cover for a common cloverleaf antenna. Mostly used for FPV racing antennas. Snaps right onto the antenna base. No glue needed.

## Print Settings

### Printer Brand:

Wanhao

### Printer:

Duplicator 6

### Rafts:

Doesn't Matter

### Supports:

Yes

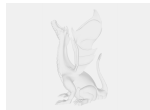
### Resolution:

0.2

**Filament:** Wanhao PLA Red

Category: R/C Vehicles

## Model files



**antenna\_cover\_v2.f3d**

---



**antenna\_cover.stl**

---



**antenna\_cover\_v2.stl**

[Find source .stl files on Thingiverse.com](#)

## License ©

This work is licensed under a  
**Creative Commons (4.0 International License)**



### Attribution

---

- ✗ | Sharing without ATTRIBUTION
- ✓ | Remix Culture allowed
- ✓ | Commercial Use
- ✓ | Free Cultural Works
- ✓ | Meets Open Definition