



Dremel tool box



siemey

[VIEW IN BROWSER](#)

updated 2. 4. 2024 | published 2. 4. 2024

Summary

Replacement for the little plastic box containing the various accessories for my Dremel 4200.

[Hobby & Makers](#) > [Organizers](#)

Tags: [dremel](#) [remix](#) [dremelaccessories](#)

A quick remix of the exceptional 'Parametric Box v2' to store my Dremel parts and accessories. Has a range of slots/holes sized and spaced to fit common accessories. This will suit a smallish collection of accessories (i.e the bundle you get with the tool, plus a few extras).

Pictured model printed in black/silver eSun PLA+HS on a Bambu X1C, using 0.2mm/Standard defaults (no support required).

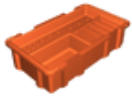
This remix is based on



Parametric Box v2 (double clasp)

by TheSameNameTwice

Model files



bottom.stl



hinge.stl

☐ Print x2 (orient on the end for best results)



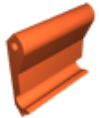
pin.stl

☐ Print x2 (orient on the long flat face for best results)



top.stl

☐ Orient the top surface on the printing plate for best results



clasp.stl

☐ Print x2 (orient on the end for best results)

License

This work is licensed under a
[Creative Commons \(4.0 International License\)](https://creativecommons.org/licenses/by-nc-sa/4.0/)



Attribution—Noncommercial—Share Alike

- ✗ | Sharing without ATTRIBUTION
- ✓ | Remix Culture allowed
- ✗ | Commercial Use
- ✗ | Free Cultural Works
- ✗ | Meets Open Definition

