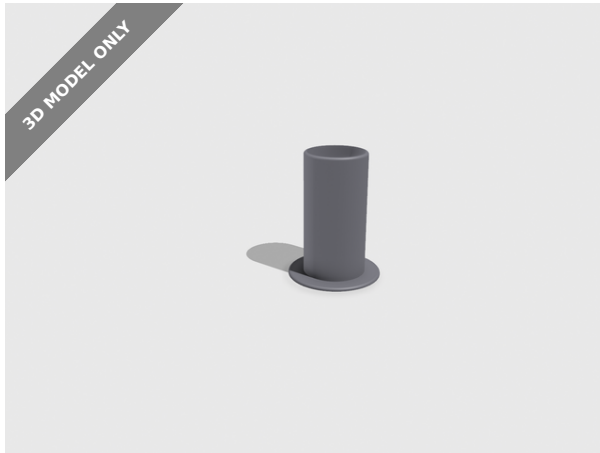


3D MODEL ONLY



zTower - Z Axis banding wobble test



poloon

[VIEW IN BROWSER](#)

updated 2. 4. 2024 | published 2. 4. 2024

Summary

simple rounded tower to test z axis.

[3D Printers](#) > [Test Models](#)

Tags: [test](#) [tower](#) [z](#) [zaxis](#) [wobble](#) [banding](#)

Model files



ztower-40mm.3mf



ztower-80mm.3mf



ztower-160mm.3mf

License ©

This work is licensed under a
Creative Commons (International License)



Public Domain

- ✓ | Sharing without ATTRIBUTION
- ✓ | Remix Culture allowed
- ✓ | Commercial Use
- ✓ | Free Cultural Works
- ✓ | Meets Open Definition