

Under Sink Garbage Disposal Wrench Caddy Holder



3DPrintM.D.

[VIEW IN BROWSER](#)

updated 2. 4. 2024 | published 2. 4. 2024

Summary

Holder for garbage disposal wrench that can either be screwed or inserted into side of cabinet under sink.



0.38 hrs



1 pcs



0.20 mm



0.40 mm



PET



4 g



Prusa MK3.5

[Household](#) > [Kitchen](#)

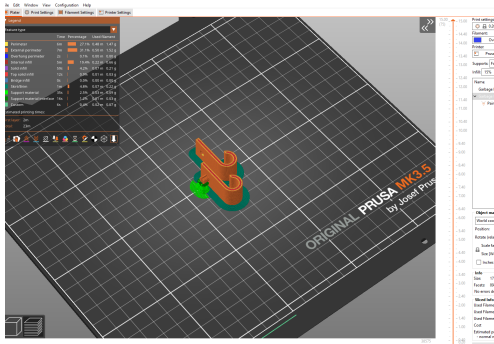
Tags: [kitchen](#) [wrench](#) [sink](#) [cabinet](#) [whirlpool](#) [hexkey](#)
[hexkeyholder](#) [wrenchholder](#) [kitchensink](#) [moen](#)
[garbagedisposal](#) [insinkerator](#) [kitchencabinet](#) [undersink](#)
[wasteking](#) [wastemaid](#) [garbagedisposalwrench](#)

Introduction and Use Case

My **garbage disposal wrench**, which I sometimes have to use to help unjam a clog and or to free up an obstruction, is never easy to find. This set of wrench holders can be either screwed or inserted into an already existing hole in the side of the the cabinet under the sink.

Printing

I printed these using PETG and 0.2mm slices. On the holder with the tab, I used organic supports and “Autopainted” the support holders on the holder with the tab. I also used brims, but that is optional and would require some post-print processing to remove.



Post-processing and Use

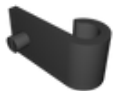
Remove brim and support material (duh) as required.

If the cabinet under your sink has small holes for shelf placement you can simply insert the tabbed wrench holder into a convenient hole. If not, you will need to screw in the holder designed for a screw.

Model files



garbage-disposal-wrench-holder.3mf



garbage-disposal-wrench-holder-with-tab.3mf



garbage-disposal-wrench-holder-for-screw.3mf

Print files



garbage-disposal-wrench-holder_04n_02mm_petg_mk35_2... .gcode

PET 0.40 mm 0.20 mm 0.38 hrs 4 g Prusa MK3.5

License

This work is licensed under a
Creative Commons (4.0 International License)



Attribution—Noncommercial—Share Alike

- ✗ | Sharing without ATTRIBUTION
- ✓ | Remix Culture allowed
- ✗ | Commercial Use
- ✗ | Free Cultural Works
- ✗ | Meets Open Definition