


# Casting Flask Alignment Pins

 Crazybillybob

[VIEW IN BROWSER](#)

updated 2. 4. 2024 | published 2. 4. 2024

## Summary

Fixed and slip Alignment Pins for casting flask.

[Hobby & Makers](#) > [Tools](#)

Tags: [flask](#) [metal](#) [casting](#) [metalcasting](#) [metalworking](#)

Fixed and slip Alignment Pins for casting flask. You need to print 2 pins, 1 slot, and 1 hole for each flask. Best results were .15 layers quality settings. Support is only needed under the pin.

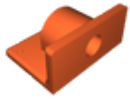
## Model files

**flask-hardware-slot-w-holes.stl**



**flask-hardware-pin-wholes.stl**





flsh-hrdware-hole-w-holes-exclearance.stl

## License

This work is licensed under a  
[Creative Commons \(4.0 International License\)](#)



**Attribution-ShareAlike**

- 
- ✗ | Sharing without ATTRIBUTION
  - ✓ | Remix Culture allowed
  - ✓ | Commercial Use
  - ✓ | Free Cultural Works
  - ✓ | Meets Open Definition