



vertical wall mount adapter for the Bluebrixx Star Trek Defiant set



skyrahfall

[VIEW IN BROWSER](#)

updated 2. 4. 2024 | published 2. 4. 2024

Summary

a wall mount to vertically mount the USS Defiant by BlueBrixx to a wall

[Art & Design](#) > [Wall-mounted](#)

Tags: [wallmount](#) [startrek](#) [bluebrixx](#)

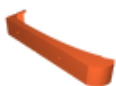
A vertical wallmount for the large brick build USS Defiant set by BlueBrixx. Printed on the side, to orient the layer in a way, the main force is not pulling the layers apart.

Downside, support is needed.

A minimal modification on the set is needed. Add three liftarms, which slide into the wallmount

Model files

defiant-wall-mount.stl



License ©

This work is licensed under a
Creative Commons (4.0 International License)



Attribution-NonCommercial

- ✗ | Sharing without ATTRIBUTION
- ✓ | Remix Culture allowed
- ✗ | Commercial Use
- ✗ | Free Cultural Works
- ✗ | Meets Open Definition