

Toilet Piggy



Printed 3D

[VIEW IN BROWSER](#)

updated 18. 4. 2024 | published 18. 4. 2024

Summary

Nice way to store a spare role of toilet tissue.

[Household](#) > [Bathroom](#)

Tags: [toilet](#) [spare](#) [piggy](#) [tissue](#) [role](#)

This little piggy is designed with tinkercad. I printed it in pink and black Filament from eSun on my Sovol SV 06.

I used 10% infill and a layer height of 0.2mm. All parts are easily printable with no supports. The face needs a filament swap from pink to black at a layer height of 5.2mm, this is layer 26.

After printing all parts you should glue the legs to the body in the same order they are standing on the print plate. E.g. the rear left leg should be glued in the rear left position and so on.

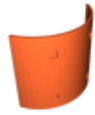
The piggy is the first model i uploaded and i wish you a lot of fun with this cute little animal.

If you download it, please consider to give it a like. Thanks a lot.

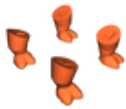
Model files



toilet-piggy-face.stl



toilet-piggy-body.stl

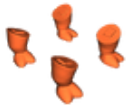


toilet-piggy-legs.stl

☐ Deprecated



toilet-piggy-belly.stl



toilet-piggy-legs-smooth.stl

☐ Smoother legs with more polygons. You should print these instead of the "Toilet Piggy Legs".

License

This work is licensed under a
[Creative Commons \(4.0 International License\)](https://creativecommons.org/licenses/by-nc-nd/4.0/)



Attribution—Noncommercial—No Derivatives

- ✗ | Sharing without ATTRIBUTION
- ✗ | Remix Culture allowed
- ✗ | Commercial Use
- ✗ | Free Cultural Works
- ✗ | Meets Open Definition

