



PlexAmp CD Scanner



edd

[VIEW IN BROWSER](#)

updated 2. 4. 2024 | published 2. 4. 2024

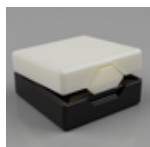
Summary

A case for holding a Raspberry Pi Pico and a Sparkfun DE2120 for use with my PlexAmp CD Barcode scanner

[Gadgets](#) > [Audio](#)

Tags: [plex](#) [barcode](#)

This remix is based on



Parametric Case/Box with Clip Latch

by Tim Angus

Model files



plexamp-cd-scanner-case.stl

License



This work is licensed under a
[Creative Commons \(4.0 International License\)](#)

Attribution—Noncommercial—Share Alike

-
- ✗ | Sharing without ATTRIBUTION
 - ✓ | Remix Culture allowed
 - ✗ | Commercial Use
 - ✗ | Free Cultural Works
 - ✗ | Meets Open Definition