



Tapping Arm (remix for flathead screws)



SirPrintsALot

[VIEW IN BROWSER](#)

updated 2. 4. 2024 | published 2. 4. 2024

Summary

Didn't have the screws for the original design. Modified 1 parts for my button head screws.



8.66 hrs



2 pcs



0.20 mm



0.40 mm



PLA



99 g



Prusa MINI /
MINI+

[Hobby & Makers](#) > [Tools](#)

Tags: [tool](#) [screws](#) [arm](#) [tap](#) [inserts](#) [threads](#) [m3](#)
[threaded](#) [insert](#) [brass](#) [tapping](#)

Printed mine in PLA at 20% infill and works well. Didn't have the socket head screws for the original design so I modified the "holder" part to work with my button head screws.

Non 3D-Printed Parts:

1. 4x M3x15mm
2. 1x M3x10mm
3. 5x Brass Insert Nut Hot Melt M3 4,5mm

Tapping Tool this works with can be bought [here](#).



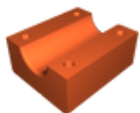
This remix is based on



Tapping Arm

by David Holečko

Model files



holder-remix-for-flathead-screws.stl

☐ no supports needed



body.stl

☐ added some support under the overhang. see gcode for example



bottom.stl

☐ no supports needed

Print files



remix-tapping-arm_04n_02mm_pla_mini_8h40m.bgcode

PLA 0.40 mm 0.20 mm 8.66 hrs 99 g Prusa MINI / MINI+



holder-remix-for-flathead-screws_04n_02mm_pla_mini_... .bgcode

PLA 0.40 mm 0.20 mm 0.72 hrs 7 g Prusa MINI / MINI+

License ©

This work is licensed under a
[Creative Commons \(4.0 International License\)](#)



Attribution-NonCommercial

- ✗ | Sharing without ATTRIBUTION
- ✓ | Remix Culture allowed
- ✗ | Commercial Use
- ✗ | Free Cultural Works
- ✗ | Meets Open Definition