

Heat set insert stand

R Rajonex

[VIEW IN BROWSER](#)

updated 2. 4. 2024 | published 2. 4. 2024

Summary

Heat set insert stand used for proper embedding of heat inserts perpendicular to the surface of the element

[Hobby & Makers](#) > [Tools](#)

Tags: [iron](#) [solder](#) [solderingiron](#) [solderingstation](#)
[heatsetinsert](#) [heatset](#) [heatsetinsertpress](#) [heatsetinserttool](#)

Heat set insert stand with optional platform.

BOM:

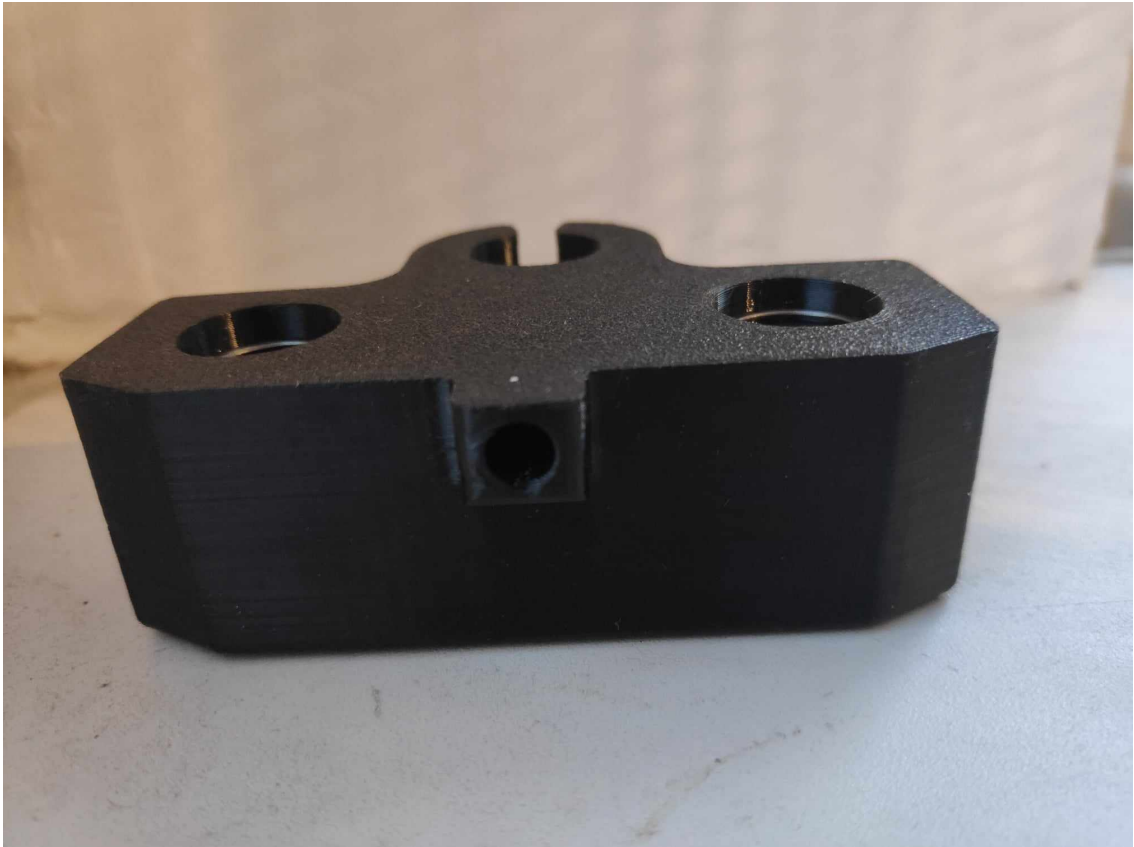
- 2x 8mm linear rods (150mm length)
- 2x linear bearing LM08UU
- 1x spring 0.5mm x 50mm x 5mm (SUGGESTION: order shorter one than me, probably 35mm will be enough)
- heat inserts
- screws and washer

Instruction:

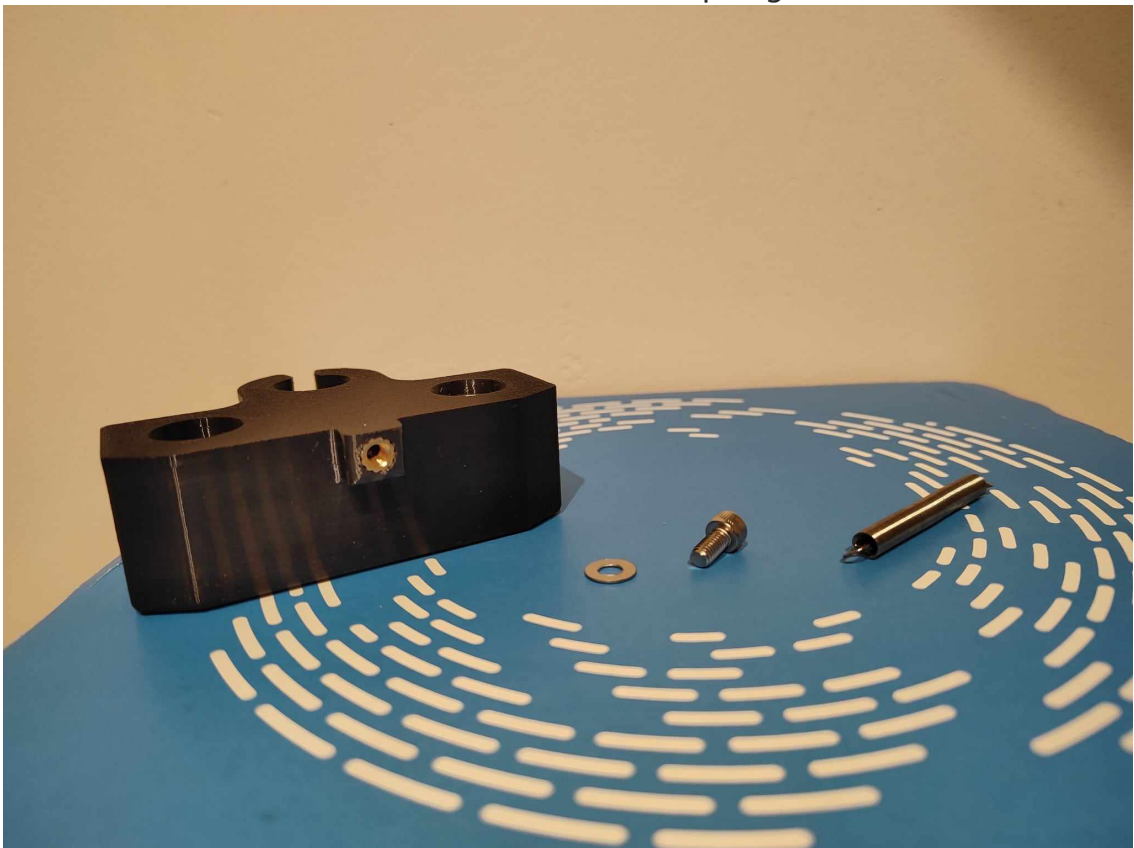
1. Insert LM08UU into 3D printed grip



2. Insert heat set insert

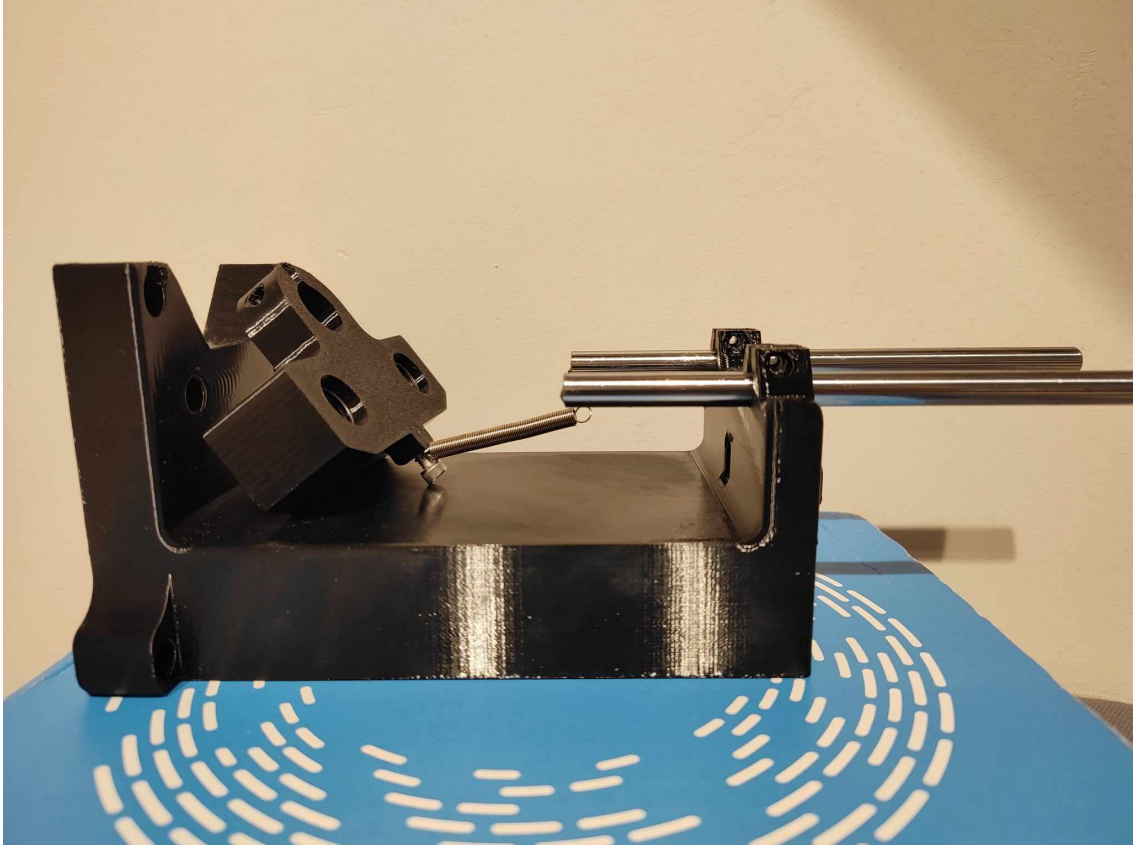


3. Put the washer on the screw and then the spring

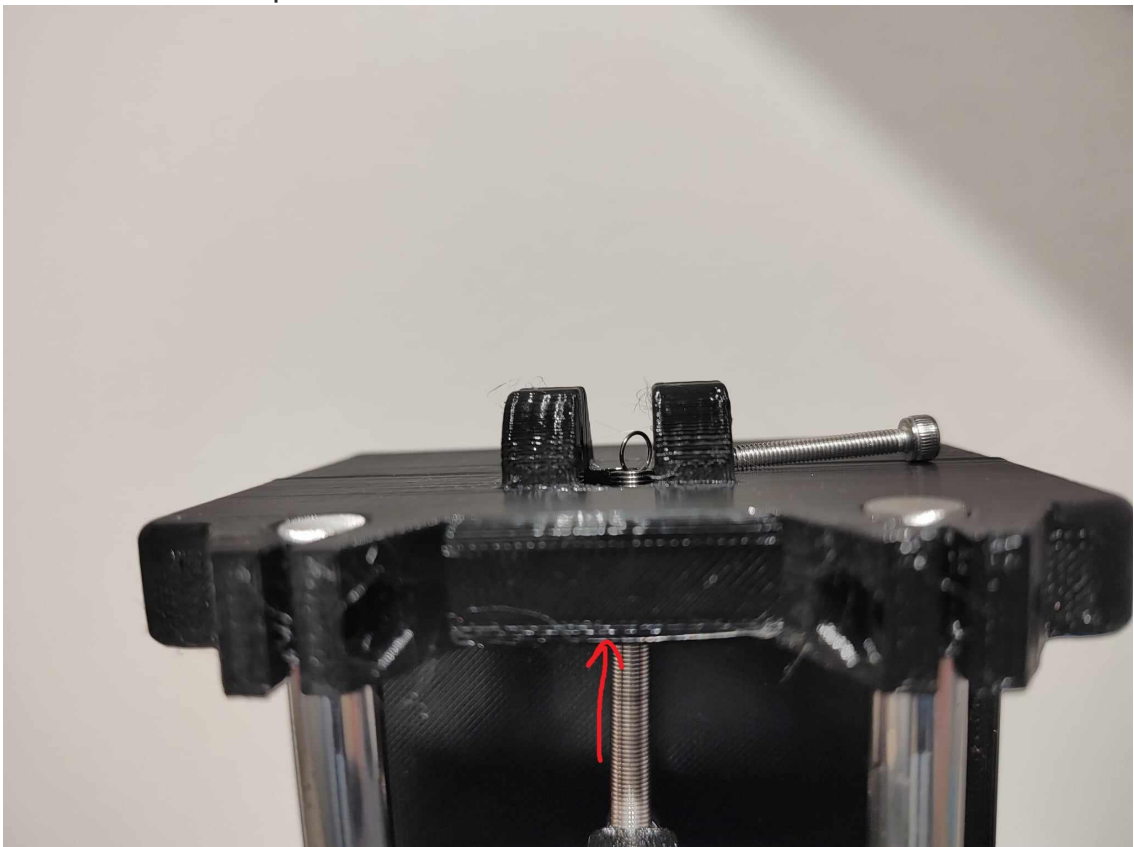


4. Insert linear rods through the top of the base, but do not insert them into the lower holes yet. Pass rods through the linear bearings in the

grip. Insert linear rods into the lower holes



5. Insert the spring through the hole at the top. Insert the screw through the hole in the mount at the top, then through the spring eye and screw it into the plastic on the other side



6. (Optional) Prepare platform (insert heatset inserts to it) and mount base to platform with screws

Model files



heat_insert_stand_base.3mf



heat_insert_stand_grip.3mf



heat_insert_stand_platform.3mf

License

This work is licensed under a
[Creative Commons \(4.0 International License\)](https://creativecommons.org/licenses/by-nc-sa/4.0/)



Attribution—Noncommercial—Share Alike

-
- ✗ | Sharing without ATTRIBUTION
 - ✓ | Remix Culture allowed
 - ✗ | Commercial Use
 - ✗ | Free Cultural Works
 - ✗ | Meets Open Definition