



ADXL345 Satsana mount



CrazyCool

[VIEW IN BROWSER](#)

updated 2. 4. 2024 | published 2. 4. 2024

Summary

This is a ADXL345 mount for this Satsana remix: <https://www.thingiverse.com/thing:5162256> The angle of the...

[3D Printers](#) > [Accessories](#)

Tags: [mount](#) [accelerometer](#) [thingiverse](#) [klipper](#) [microswiss](#)
[satsana5015bltouch](#) [satsana](#) [adxl345](#) [adxl345mount](#)
[inputshaping](#) [adxlmount](#) [accelerometermount](#)

This is a ADXL345 mount for this Satsana remix: <https://www.thingiverse.com/thing:5162256>

The angle of the accelerometer mount is 12.5 (from vertical) so maybe that works with other Satsana's, but I have not tested. I added files for one version that requires heated inserts and one that does not. Both are designed to use m3 screws. I also included spacers to space the mount from the fan in case your fan hits the mount.

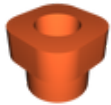
Model files



adxl345_no_inserts.stl



adxl345_with_inserts.stl



accelerometer_spacer.stl

[Find source .stl files on Thingiverse.com](https://www.thingiverse.com)

License ©



This work is licensed under a
Creative Commons (4.0 International License)

Attribution-ShareAlike

-
- ✗ | Sharing without ATTRIBUTION
 - ✓ | Remix Culture allowed
 - ✓ | Commercial Use
 - ✓ | Free Cultural Works
 - ✓ | Meets Open Definition