

MacBook Pro Magsafe2 USB-C Cable Port



HMartinez

[VIEW IN BROWSER](#)

updated 2. 4. 2024 | published 2. 4. 2024

Summary

Helps simplify plugging both MagSafe and USB-C connectors into the left side of a MacBook Pro. Four Versions: All have...

[Gadgets](#) > [Computers](#)

Tags: [cablemanagement](#) [usbc](#) [thingiverse](#) [magsafe2](#)

Helps simplify plugging both MagSafe and USB-C connectors into the left side of a MacBook Pro.

Four Versions (all in single STL file):

All have standard MagSafe connector for MacBook Pro Max

Two of them have the larger USB-C connectors usually associated with adapter (like the Uni USB-C to LAN adapter), the othe two have the standard USB connector.

Two sets have a notch for the LED (in case you print with dark color material)

Two sets don't have a notch for the LED (in case you print with translucent material)

If you look at the photos you'll see what I mean.

Print Settings

Printer Brand:

Snapmaker

Printer:

J1

Rafts:

No

Supports:

No

Resolution:

Luban: Rough (0.24mm)

Infill:

100%

Filament: SunLu TPU Black or White

Notes:

Print the version you want, on- end, as oriented in the .STL file.

I used TPU because of it's flexibility and grip.

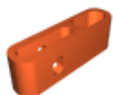
Post-Printing

Not complicated

Just makes life a little easier each time we dock or undock or MacBooks.

Category: Computer

Model files



macbookpromax_ports.stl

License ©

This work is licensed under a
Creative Commons (4.0 International License)



Attribution—Noncommercial—Share Alike

- ✗ | Sharing without ATTRIBUTION
- ✓ | Remix Culture allowed
- ✗ | Commercial Use
- ✗ | Free Cultural Works
- ✗ | Meets Open Definition