



Mostly Printed CNC Primo J-25.4mm MPCNC - Cable/ Drag Chain



Mike G.

[VIEW IN BROWSER](#)

updated 3. 4. 2024 | published 3. 4. 2024

Summary

Cable chain for the Z-Axis on the MPCNC J-25.4mm version.

[Hobby & Makers](#) > [Tools](#)

Tags: [cable](#) [chain](#) [mpcnc](#) [primo](#)

Wasn't a fan of what I was finding online for a cable chain on the Z-axis of the MPCNC Primo. Decided to design my own and it works great. This is for the J-25.4MM Version.

Hardware needed for this:

- 8 x M3x5x4 Voron spec heatset inserts (2 in each truck clamp, 4 for the Z clamp)
- 2 x M3x6 flat socket head screws - right truck clamp
- 4 x M3x10 flat socket head screws - left truck clamp and z-chain mount to cable chain
- 2 x M3x18 socket head cap screws - Z-clamp
- R28 Internal Size 15X15mm Cable chain, comes in 1 meter sections on amazon
- 1" by 1" Aluminum L-Channel, 1/16" thick, get as long as you need. Picked this up from a local hardware store called Menards.

What you need to print to get this installed:

- truck-clamp-j-primo-dragchain-left
- truck-clamp-j-primo-dragchain-right
- z-dragchain-clamp1

Then you need to chose one of the two:

- z-dragchain-clamp2 - flat mounting point for z cable chain
- z-dragchain-clamp2-raised - raises cable chain up about 14mm

Not required but helpful templates to mark/drill holes in the aluminum J channel.

- truck-clamp-j-primo-dragchain-leftTEMPLATE
- truck-clamp-j-primo-dragchain-rightTEMPLATE

This remix is based on

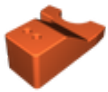


Mostly Printed CNC Primo J-25.4mm MPCNC

by V1 Engineering

Model files

z-dragchain-clamp2-raised.stl

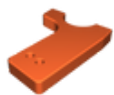


truck-clamp-j-primo-dragchain-left.stl



z-dragchain-clamp1.stl





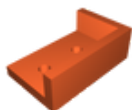
z-dragchain-clamp2.stl



truck-clamp-j-primo-dragchain-right.stl



truck-clamp-j-primo-dragchain-lefttemplate.stl



truck-clamp-j-primo-dragchain-righttemplate.stl

License

This work is licensed under a
[Creative Commons \(4.0 International License\)](https://creativecommons.org/licenses/by-nc-sa/4.0/)



Attribution—Noncommercial—Share Alike

- ✗ | Sharing without ATTRIBUTION
- ✓ | Remix Culture allowed
- ✗ | Commercial Use
- ✗ | Free Cultural Works
- ✗ | Meets Open Definition