



Furtail 3



Jake Xie

[VIEW IN BROWSER](#)

updated 3. 4. 2024 | published 3. 4. 2024

Summary

Cable driven tail frame for cosplay use

[Costumes & Accessories](#) > [Cosplay & Costumes in general](#)

Tags: [robots](#) [animatronic](#) [furtail](#)

Let's make a robot tail.

Some parts need to be printed using high temp filaments to endure the heat from working servos.

The MotorFrame is designed for DS3235 servos, you can change the design in the STEP file to fit your servos.

Tpu parts is suggested to 100% filled,based on 98A tpu.

The driven cable is 0.6mm PE braided fishing line.

Eletronic parts can be found in Furtail3Resources.zip,

Model files

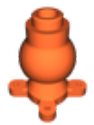


PLA

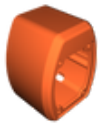
14 files



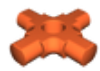
framea.stl



balljoint.stl



cboxa.stl



cross.stl



framebase.stl



cboxb.stl



tensiona.stl



backboard.stl



tensionb.stl



frametoball.stl



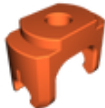
tensionc.stl



cboxc.stl



cboxd.stl



frameb.stl



TPU

4 files



tc-a.stl

☐ For 3 FrameA+B



tb-9.stl

☐ For 9 Balljoints



tc-b.stl

☐ For extra 3 FrameA+B



tb-6.stl

☐ For 6 Balljoints



HighTempMaterial

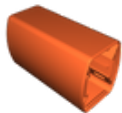
6 files



cpstanb.stl



motorboxa.stl



motorboxb.stl



motorboxc.stl



motorframe.stl



cpstana.stl

furtail3controlbox.step

furtail3frame.step

Other files

furtail3resources.zip

License

This work is licensed under a
Creative Commons (4.0 International License)



Attribution

- ✗ | Sharing without ATTRIBUTION
- ✓ | Remix Culture allowed
- ✓ | Commercial Use
- ✓ | Free Cultural Works
- ✓ | Meets Open Definition