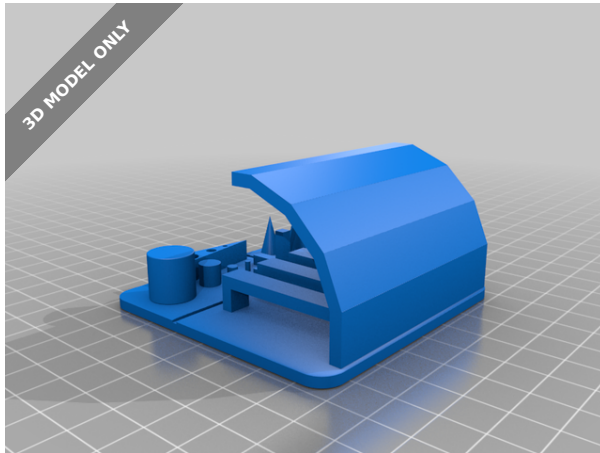


3D MODEL ONLY



## Printer torture tests



Joshanson527

[VIEW IN BROWSER](#)

updated 3. 4. 2024 | published 3. 4. 2024

### Summary

This Thing is licensed under the Creative Commons - Attribution - Non-Commercial - ShareAlike license. This means to...

[3D Printers](#) > [Test Models](#)

Tags: [test](#) [torture](#) [torturetest](#) [testprint](#) [thingiverse](#)  
[calibrationtest](#) [printercalibration](#) [printertorturetest](#)  
[overhangtorturetest](#)

This Thing is licensed under the Creative Commons - Attribution - Non-Commercial - ShareAlike license. This means to share with other people you MUST give appropriate credit and a link to this page. YOU MAY NOT SELL this design, and if you remix this you must use the same license.

Sorry, I just want to make sure people follow the licenses :)

Here listed are two torture tests, one big (3in x 3in) and the other smaller (3in x 1in).

FOR THE BIG ONE (3" x 3"):

Overhangs are obvious, those just test how far your printer can go

Bridging gets longer as you go on, see how far your printer can go

If there is strings in between the spikes, increase your retraction distance and decrease print temp about 3 degrees Celsius

The three-axis thing should be half an inch in all directions from base to tip

The cylinders should be 1/16, 1/8, 1/4, and 1/2 of an inch in diameter from smallest to biggest

The holes in the triangle should be 1/16, 1/8, and 1/4 of an inch in diameter from smallest to biggest

the dimensions of the triangle are irrelevant.

the base should be 3 x 3 inches

FOR THE SMALLER ONE (3" x 1"):

Pretty much the same as the other one, just without the diameter tests

Overhangs are obvious, those just test how far your printer can go

Bridging gets longer as you go on, see how far your printer can go

If there is strings in between the spikes, increase your retraction distance and decrease print temp about 3 degrees Celsius

The three-axis thing should be half an inch in all directions from base to tip

The base should be 3 x 1 inches

## **Print Settings**

### **Printer Brand:**

Prusa

### **Printer:**

i3 MK3 MMU 2

### **Rafts:**

No

### **Supports:**

No

### **Resolution:**

20mm SPEED

**Infill:**

20%

**Filament:** flashforge PLA any

Category: 3D Printing Tests

## Model files



printer\_torture\_test.stl



mini\_printer\_torture\_test.stl

[Find source .stl files on Thingiverse.com](#)

## License ©



This work is licensed under a  
**Creative Commons (4.0 International License)**

**Attribution—Noncommercial—Share Alike**

- 
- ✗ | Sharing without ATTRIBUTION
  - ✓ | Remix Culture allowed
  - ✗ | Commercial Use
  - ✗ | Free Cultural Works
  - ✗ | Meets Open Definition