

Raspberry Pi V2. Camera mount for Prusa i3 MK3



ed

[VIEW IN BROWSER](#)

updated 12. 4. 2022 | published 31. 10. 2019

Summary

2018/07/11: Added step files per request...

[3D Printers](#) > [3D Printers - Upgrades](#)

Tags: [prusamk3](#) [originalprusamk3](#) [raspberrypicamera](#)

2018/07/11: Added step files per request... Note: I take no credit for the quality of the step files as I have to have someone else convert them for me.

2018/03/25: Added mount for left side of printer, M1C, and shorter stanchion, C3A. I kind of prefer the view from the shorter stanchion.

2018/03/21: Old revisions deleted.

2018/03/19 Update:

After looking at FourOhFour's make I added a clip to hold the ribbon cable and added a couple of different arm styles. Based on his comments I switched my arm to the m1b version, I marked c4 and m1a as old revisions but will leave them in case someone prefers one of those...

I added a clip, m3, to attach the ribbon cable to the arm. Clip is 1mm thick, (2 layers), by 5mm wide.

I also added an arm with a radial slot, m1a, and an arm with a square end and an 18mm wide slot at the end, m1b.

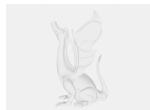
I printed all items using the default 2mm fast profile in Slic3r PE except I dropped jerk to 8 and changed acceleration to 1000 in printer settings, but that's just my preference.

2018/03/14:

I didn't like the idea that the ribbon cable exited the top of the camera housing and had trouble getting the camera housing to stay together on jgeyer's model so I decided to try to make one that would snap together and this is the result. I undersized the hole on C3 so that a nut would not be required, in doing so you'll have to use some force to get the threads started when assembling so do so prior to attaching to the printer. All pieces were designed around an M3x16 hex screw. I also left the through holes open in the back cover so a drop of superglue could be added to keep the camera case secure if it doesn't snap together...

Print instructions Category: 3D Printer Accessories Custom Section

Model files



c3a.stp



c3a.stl



m1b.stl



c3.stl



c2.stl



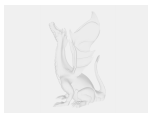
m3.stl



c1.stl



m1c.stl



m1c.stp

[Find source .stl files on Thingiverse.com](https://www.thingiverse.com)

License

This work is licensed under a
Creative Commons (4.0 International License)



Attribution

- ✗ | Sharing without ATTRIBUTION
- ✓ | Remix Culture allowed
- ✓ | Commercial Use
- ✓ | Free Cultural Works
- ✓ | Meets Open Definition