



# Raspberry Pi HQ M12 Camera Mount for telescope



Scraz

[VIEW IN BROWSER](#)

updated 27. 5. 2024 | published 27. 5. 2024

## Summary

1 1/4" barrel mount for Raspberry Pi HQ M12 camera.



0.81 hrs



1 pcs



0.20 mm



0.40 mm



ASA



9 g



Prusa MK4

[Learning](#) > [Physics & Astronomy](#)

Tags: [cameramount](#) [astronomy](#) [raspberrypi](#)

[raspberrypicamera](#)

[astronomytelescope](#)

[raspberrypihqcamera](#)

[astrophotography](#)

I wasn't aware the M12 variant existed... I thought there was only one model of HQ camera so I was a bit surprised when I unboxed it. I couldn't find a way to mount it to my telescope so I put together this basic design. I used some standoffs I had laying around. 9mm doesn't quite fill the gap, but screws can hold it in place from both sides just fine.

bgcode is for ASA.

I'm not sure how much infill is necessary, I used 100% for strength.

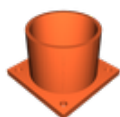
Edit: I finally got around to taking pics, and I've uploaded one as an example of what to expect. This was taken using a Celestron 6se with a 6.3 reducer. I'm planning on designing a different mount to fit over a lens so that I can get the whole moon in view.

Edit 2: I fixed the .stl file and uploaded it.

Edit 3: I swapped the 9mm stand-offs with 11mm stand-offs. However, that leaves a tiny gap because the stand-offs are a tiny bit too long, which I mitigated by inserting a TPU gasket between the mount and the camera with the following dimensions:

- 27mm diameter
- negative cylinder 17mm diameter in the center
- 0.6mm z height

## Model files



**backplate\_w\_adapter\_final.stl**

## Print files



**backplate\_w\_adapter\_002\_04n\_02mm\_asa\_mk4\_49m.bgcode**

ASA 0.40 mm 0.20 mm 0.81 hrs 9 g Prusa MK4

## License ©

This work is licensed under a  
[Creative Commons \(4.0 International License\)](#)



**Attribution—Noncommercial—No Derivatives**

---

- ✖ | Sharing without ATTRIBUTION
- ✖ | Remix Culture allowed
- ✖ | Commercial Use
- ✖ | Free Cultural Works
- ✖ | Meets Open Definition