

Luke Skywalker's Lightsaber (Episode VI)



CaseStudyno8

[VIEW IN BROWSER](#)

updated 8. 5. 2024 | published 8. 5. 2024

Summary

Here's Luke Skywalker's lightsaber from Return of the Jedi! Be sure to print two of the triangular indicator pieces,...

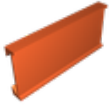
[Costumes & Accessories](#) > [Props](#)

Tags: [toy](#) [starwars](#) [prop](#) [jedi](#) [lightsaber](#) [thingiverse](#)
[skywalker](#) [returnofthejedi](#) [luceskywalker](#)

Here's Luke Skywalker's lightsaber from Return of the Jedi! Be sure to print two of the triangular indicator pieces, those are very small prints, I would suggest printing them at the same time as some of the larger pieces to let them cool between layers.

Category: Props

Model files



luke_skywalker_ep6_-_switch_casing.stl



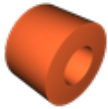
luke_skywalker_ep6_-_switch.stl



luke_skywalker_ep6_-_lower_disc.stl



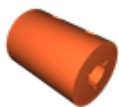
luke_skywalker_ep6_-_grip.stl



luke_skywalker_ep6_-_emitter_nipple.stl



luke_skywalker_ep6_-_luke_emitter.stl



ep6_luke_midsection_solid.stl



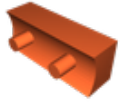
ep6_luke_pommel_solid.stl



ep6_luke_grip_solid.stl



luke_skywalker_ep6_-_pommel.stl



luke_skywalker_ep6_-_switch_lower.stl



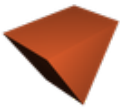
luke_skywalker_ep6_-_belt_ring.stl



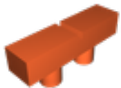
luke_skywalker_ep6_-_upper_copper_coupling.stl



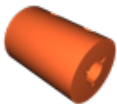
luke_skywalker_ep6_-_upper_disc.stl



luke_skywalker_ep6_-_triangular__indicator.stl



luke_skywalker_ep6_-_power_regulator.stl



luke_skywalker_ep6_-_midsection.stl

[Find source .stl files on Thingiverse.com](https://www.thingiverse.com/thing:4511111)

License

This work is licensed under a
Creative Commons (4.0 International License)



Attribution-NonCommercial

- ✗ | Sharing without ATTRIBUTION
- ✓ | Remix Culture allowed
- ✗ | Commercial Use
- ✗ | Free Cultural Works
- ✗ | Meets Open Definition