



Ahsoka Tano's Lightsabers (Clone Wars)



CaseStudyno8

[VIEW IN BROWSER](#)

updated 8. 5. 2024 | published 8. 5. 2024

Summary

Ahsoka Tano's Lightsabers from the Star Wars: Clone Wars animated series! Be sure to print 2 tabs for the main hilt....

[Costumes & Accessories](#) > [Props](#)

Tags: [starwars](#) [prop](#) [lightsaber](#) [thingiverse](#) [industrialdesign](#)
[lightsaberahsoka](#)

Ahsoka Tano's Lightsabers from the Star Wars: Clone Wars animated series!

Be sure to print 2 tabs for the main hilt. All of the STLs are in the orientation I printed them. Personally, I printed the tabs of the main saber and the Outer Chamber of the off hand saber with supports generated in Cura.

If you have a smaller build plate height wise, there are split versions of the outer chambers provided. they are labeled as "SPLIT Outer Chamber Upper and Lower" for both hilts.

Updated on 1/4/17: Added Ahsoka's off hand saber and some tweaks to her main hilt

Category: Props

Model files



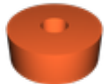
cw_ahsoka_-_large_button_inner.stl



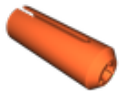
ahsoka_off-hand_-_lower_emitter.stl



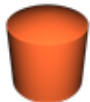
ahsoka_off-hand_-_button_1.stl



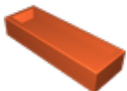
ahsoka_off-hand_-_middle_emitter.stl



cw_ahsoka_-_split_outer_chamber_lower.stl



cw_ahsoka_-_red_button.stl



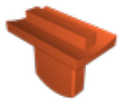
cw_ahsoka_-_button_housing.stl



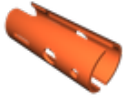
cw_ahsoka_-_outer_chamber.stl



cw_ahsoka_-_large_button.stl



cw_ahsoka_-_tabs.stl



cw_ahsoka_-_split_outer_chamber_upper.stl



ahsoka_off-hand_-_pommel.stl



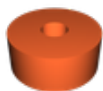
cw_ahsoka_-_inner_chamber.stl



ahsoka_off-hand_-_split_outer_chamber_upper.stl



cw_ahsoka_-_lower_emitter.stl



cw_ahsoka_-_middle_emitter.stl



ahsoka_off-hand_-_upper_emitter.stl



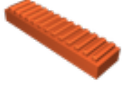
cw_ahsoka_-_middle_bottom_chamber.stl



ahsoka_off-hand_-_outer_chamber.stl



ahsoka_off-hand_-_split_outer_chamber_lower.stl



cw_ahsoka_-_on-off_button.stl



cw_ahsoka_-_pommel.stl



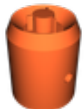
cw_ahsoka_-_upper_button_outer.stl



ahsoka_off-hand_-_button_a.stl



ahsoka_off-hand_-_inner_chamber.stl



cw_ahsoka_-_middle_chamber.stl



cw_ahsoka_-_upper_button.stl



cw_ahsoka_-_small_button.stl



cw_ahsoka_-_upper_emitter.stl

License ©

This work is licensed under a
Creative Commons (4.0 International License)



Attribution-NonCommercial

- ✗ | Sharing without ATTRIBUTION
- ✓ | Remix Culture allowed
- ✗ | Commercial Use
- ✗ | Free Cultural Works
- ✗ | Meets Open Definition