

## 25 to 40mm Fan Bracket



Ghost\_Zen

[VIEW IN BROWSER](#)

updated 6. 5. 2024 | published 6. 5. 2024

### Summary

25 to 40mm Fan Bracket

[3D Printers](#) > [Other Printer Parts & Upgrades](#)

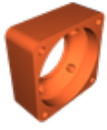
Tags: [3d](#) [holder](#) [printer](#) [ender](#) [bracket](#) [fan](#) [adapter](#)  
[cooling](#) [duct](#) [4010](#) [4020](#) [2510](#) [ender7](#)

I'm in the process of converting the Archetype Toolhead for the Ender 7 and am currently testing the first version I created.

What I noticed right away is that the creator of the Archetype toolhead originally uses a 2510 fan, which is not an option for me at all, so I created an adapter.

I used melted knurled threads for the attachment, but I also made holes for M3 nuts.

# Model files



25mm-to-40mm-fan-adapter.stl

## License ©



This work is licensed under a  
[Creative Commons \(4.0 International License\)](#)

**Attribution-NonCommercial**

- 
- ✗ | Sharing without ATTRIBUTION
  - ✓ | Remix Culture allowed
  - ✗ | Commercial Use
  - ✗ | Free Cultural Works
  - ✗ | Meets Open Definition