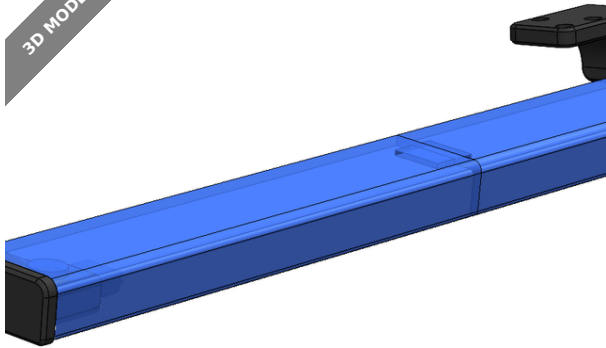


3D MODEL ONLY



Ender V3 SE LED System



MetaMoldz

[VIEW IN BROWSER](#)

updated 11. 5. 2024 | published 11. 5. 2024

Summary

An upgrade to the LED system offered by Creality.

[3D Printers](#) > [Creality Parts & Upgrades](#)

Tags: [light](#) [led](#) [magnet](#) [creality](#)

I added a few aesthetic and functional features to improve the LED system offered by Creality.

- A 10 degree downward tilt of the bracket supporting the light bar, focused more onto the center of the build plate.
- Proper channels for the wiring to be hidden and discrete. (It still requires drilling through one of the screw holes and running wire down to the motherboard)
- Addition of a removable light shade utilizing a total of 4 neodymium magnets 10mmx2mm

Printed in PETG, Black for the brackets and a semi-transparent blue with a honeycomb infill. The infill structure is very subtle but noticeable when only the LED is on in the room.

Enjoy!

Model files



led_left_bracket.stl



led_right_bracket_power.stl



led-cover_l.stl



led-cover_r.stl



led-cover-connector.stl

License

This work is licensed under a
[Creative Commons \(4.0 International License\)](https://creativecommons.org/licenses/by-nc/4.0/)



Attribution-NonCommercial

- ✗ | Sharing without ATTRIBUTION
- ✓ | Remix Culture allowed
- ✗ | Commercial Use
- ✗ | Free Cultural Works
- ✗ | Meets Open Definition

