

## Turbo for crocs

[VIEW IN BROWSER](#)

updated 6. 5. 2024 | published 6. 5. 2024

### Summary

Turbo charm for crocs



2.57 hrs



1 pcs



0.20 mm



0.40 mm



PLA



17 g

Prusa  
MK3/S/S+[Fashion](#) > [Other Fashion Accessories](#)Tags: [turbo](#) [crocs](#) [crocscharm](#)

### ENGLISH description:

Turbocharger charm for your crocs. For printing, I recommend to cut the model in 3 pieces for best printing experience. Then you don't have to use so much supports. For gluing, my recommendation is to use Bison superglue or classic Loctite.

### Printing instructions:

#### ■ Steel sheet

→ at your own preference (textured PEI for PETG material)

### ■ Nozzle

→ 0.4 or smaller for better resolution

### ■ Material

→ PLA

### ■ Infill

→ 15-20%

### ■ Circuits

→ 0

### ■ Supports

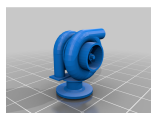
→ YES

### SK/CZ popis:

Turbodúchadlo pre kroksy. Super ako darček pre fanúšikov áut. Alebo len tak pre zábavu. Pre tlačenie odporúčam model rozdeliť na 3 časti pre menší počet následných podpor a lepšiu tlač. Na následné zlepenie odporúčam sekundové lepidlá Bison v gély alebo klasický Loctite.

→ I will be very grateful for every download and comment feedback you post. Have a nice day!

## This remix is based on



### Turbo for croc

by Ovonal

## Model files



STL

2 files



### shiny\_albar-crocs.stl

☐ Full model



### shiny\_albar-crocs-sliced-in-pieces.stl

☐ cut in 3 pieces



3MF

2 files



### shiny\_albar-crocs.3mf

☐ full model



### shiny\_albar-crocs-in-3-pieces.3mf

☐ 3 piece model

## Print files



### crocs-charm\_pla\_mk3s\_2h34m.gcode

PLA 0.40 mm 0.20 mm 2.57 hrs 17 g Prusa MK3/S/S+

☐ Version sliced with spoiler

## License

This work is licensed under a  
[Creative Commons \(4.0 International License\)](#)



**Attribution—Noncommercial—Share Alike**

- ✗ | Sharing without ATTRIBUTION
- ✓ | Remix Culture allowed
- ✗ | Commercial Use
- ✗ | Free Cultural Works

✖ | Meets Open Definition