



Harry Potter Love - HueForge



Think3D

[VIEW IN BROWSER](#)

updated 6. 5. 2024 | published 6. 5. 2024

Summary

HueForge

[Art & Design](#) > [2D Plates & Logos](#)

Tags: [art](#) [harry](#) [harrypotter](#) [movie](#) [tv](#) [painting](#) [2d](#)
[series](#) [2dart](#) [wallart](#) [hueforge](#)

Hey friends, here's my latest model.
You can change the size of the X and Y axes,
but DO NOT change the Z axis.

Print at 100% infill with a layer height of 0.08mm with a base layer of 0.16mm.

Start with Black

At layer #14 (1.2mm) swap to Gray

At layer #24 (2mm) swap to Jade White for the rest.

Store: <https://thinkto3d.etsy.com>

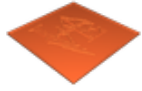
Donate: https://paypal.com/donate/?hosted_button_id=RWRXKCAEM86K8

Commercial license: https://patreon.com/Think_3D/membership

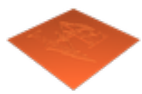
Model files

hl_170x170-frame.3mf

hl_170x170.3mf



hl_frame_170x170.stl



hl_170x170.stl

Other files

hl_describe.txt

License

This work is licensed under a
[Creative Commons \(4.0 International License\)](#)



Attribution-NonCommercial

- ✗ | Sharing without ATTRIBUTION
- ✓ | Remix Culture allowed
- ✗ | Commercial Use
- ✗ | Free Cultural Works
- ✗ | Meets Open Definition