



## Bike beverage buddy - can and cup holder for fathers day



CPA3D

[VIEW IN BROWSER](#)

updated 18. 6. 2024 | published 18. 6. 2024

### Summary

Keep your beverage safe while riding your bike. Can holder for 0.33l and 0.5l cans with a diameter of 66mm.

[Toys & Games](#) > [Vehicles](#)

Tags: [beer](#) [can](#) [cup](#) [drink](#) [accessory](#) [bicycle](#)  
[accessories](#) [bike](#) [outdoor](#) [cupholder](#) [cycling](#) [fathersday](#)  
[beverage](#) [vatertag](#)

Fathers days tours are difficult. You need to ride a bicycle and at the same time have a place to store your beverage, but your hands are busy. Suffer no more, because here is the solution - the bike beverage buddy. Hands on driving but have your beverage ready for any stop.

You can use it for:

- Beverages
- Espresso
- Elderflower-Lemonade
- Raspberry-Lemonade

The Clamp is designed with a diameter of 32mm. For smaller handle bars, you need to add some rubber or other padding.

The following materials are needed:

- 2x Screws M5x40 DIN 933 for mounting with tools or
- 2x Screws M5x50 DIN 933 when you want to use the 3D Printed screw-head to mount it by hand
- 1x Screw M5x16 DIN 933 for 32mm brackets or
- 1x Screw M5x20 DIN 933 for 26mm brackets
- 3x Self-Fastening Nut M5 DIN 985
- 3x M5 Washer

Printing Instructions for PLA:

Holder and Clamps:

- Orientation: lay on the side surfaces to improve stability
- Layer-height: 0.2mm
- Infill: 15%
- Supports: no

Screw-Knobs:

- Layer-height: 0.08mm
- Infill: 100%
- Supports: no
- Brim: outer

You can find the model on Makerworld too: <https://makerworld.com/en/models/465062>

## Model files



**holder\_small.stl**



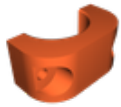
**holder\_tall.stl**

---



**clamp\_1\_32mm.stl**

---



**clamp\_2\_32mm.stl**

---



**screw.stl**

---



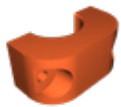
**holder\_small\_v2.stl**

---



**clamp\_1\_26mm.stl**

---



**clamp\_2\_26mm.stl**

## License ©

This work is licensed under a  
[Creative Commons \(4.0 International License\)](#)



**Attribution-NonCommercial**

---

- ✗ | Sharing without ATTRIBUTION
- ✓ | Remix Culture allowed
- ✗ | Commercial Use
- ✗ | Free Cultural Works
- ✗ | Meets Open Definition

