

# Bambu Bearing Roller Filament Spool Holder



soulrider911

[VIEW IN BROWSER](#)

updated 12. 7. 2024 | published 12. 7. 2024

## Summary

With this bearing-based filament holder, your externally mounted filament can roll resistance-free.

[3D Printers](#) > [Bambu Lab Parts & Upgrades](#)

Tags: [filamentspoolholder](#) [filamentguide](#) [filamentholder](#)  
[filamentroller](#)

**With this bearing-based filament holder, your externally mounted filament can roll resistance-free. I print a lot of TPU and having the filament be fed unresisted is pretty important.**

This is a heavily remixed and redesigned version of [Eldenroot's Spool holder](#).

### How to assemble

1. Print all parts
2. Glue the screw into the Roller Tray (it's a tight fit on purpose)
3. Screw the roller tray onto the external filament arm (Left or right)
4. Assemble the rollers with the bearings and drop the assembly into the tray

## Non-Printed parts

- 2x ball bearing - type 608zz or similar (608 series)
- Some CA glue and highly recommended accelerator, to glue the screw into the roller tray.

## Printing:

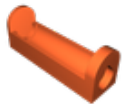
- PLA / PETG
- .2mm Layer Height
- Recommend 5 walls
- Infill 20-30%

## This remix is based on



**Spool Holder with ball bearings for A1 printer Remixed by Eldenroot**

## Model files



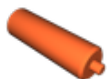
**rollertray.stl**

---



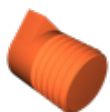
**riser-adapter.stl**

---



**roller.stl**

---



**screw.stl**

---

roller\_single.3mf

## License ©

This work is licensed under a  
**Creative Commons (4.0 International License)**



**Attribution-NonCommercial**

---

- ✗ | Sharing without ATTRIBUTION
- ✓ | Remix Culture allowed
- ✗ | Commercial Use
- ✗ | Free Cultural Works
- ✗ | Meets Open Definition