



Barbell Landmine



Downwritemad

[VIEW IN BROWSER](#)

updated 13. 7. 2024 | published 13. 7. 2024

Summary

Landmine attachment that works with a standard olympic barbell for power racks.

[Sports & Outdoor](#) > [Indoor Sports](#)

Tags: [lifting](#) [fitness](#) [rogue](#) [landmine](#) [barbell](#) [rep](#)
[roguefitness](#) [squatrack](#) [repfitness](#) [landminerow](#)

Coupled with [another model](#) to add a landmine attachment to any fitness rack.

Printed with 7 walls to create a mostly solid plastic sleeve. Sleeve features 12mm holes.

Accessories for full setup:

4x12mm OD (8.5mm bore) sleeve bearings (pressed into sleeve and rack coupler with an iron and a bench vise)

2x18mm OD (16mm bore) sleeve bearing (heat pressed or epoxied into place)

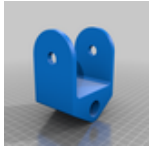
1xM8 bolt plus nut

1x5/8-11 bolt plus nut

2x12mm ID nylon washers (fit between barbell sleeve and rack coupler)

2x16mm ID washers

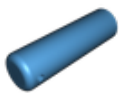
This remix is based on



Landmine Adapter

by Yves Chaudron

Model files



landmine.3mf

License ©

This work is licensed under a
[Creative Commons \(4.0 International License\)](#)



Attribution

-
- ✗ | Sharing without ATTRIBUTION
 - ✓ | Remix Culture allowed
 - ✓ | Commercial Use
 - ✓ | Free Cultural Works
 - ✓ | Meets Open Definition