



DRZ400 crankshaft balancing stand



MichaelW

[VIEW IN BROWSER](#)

updated 12. 7. 2024 | published 12. 7. 2024

Summary

Print the top near where the skate bearings mount with a modifier and 100% infill. The first balancing stand is...

[Hobby & Makers](#) > [Automotive](#)

Tags: [thingiverse](#) [drz400](#) [drz400e](#) [drz400sm](#)

Print the top near where the skate bearings mount with a modifier and 100% infill. The first balancing stand is actually untested, the 2nd balancing stand is tested, but if you push it the wrong way, without a lot of infill, it affects the reading. I tried to strengthen the 2nd iteration, but I have not had the chance to test it. The first one works if you spin it from the center of the crank. Print the 20mm pins for the new design.

Note: the pictured balancing stand is fully tested & functional

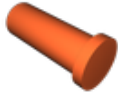
Category: Automotive

Model files

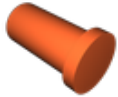


crankshaft_balancing_stand_inventor.stl

drz_crankshaft_balancing_stand.ipt



775_diameter_20mm_long_pin.stl



775.stl



drz_crankshaft_balancing_stand.stl

crankshaft_balancing_stand_inventor.ipt

[Find source .stl files on Thingiverse.com](#)

License ©



This work is licensed under a
Creative Commons (4.0 International License)

Attribution

-
- ✗ | Sharing without ATTRIBUTION
 - ✓ | Remix Culture allowed
 - ✓ | Commercial Use
 - ✓ | Free Cultural Works
 - ✓ | Meets Open Definition

