

Midea AC hose connector

 **Capt. Happy**

[VIEW IN BROWSER](#)

updated 12. 7. 2024 | published 12. 7. 2024

Summary

A hose connector for Midea (Comfee in Europe) portable air conditioner hoses.

[Household](#) > [Other House Equipment](#)

Tags: [air](#) [duct](#) [connector](#) [vent](#) [portable](#) [hose](#)
[airconditioner](#) [ac](#) [comfee](#) [midea](#)

This is a hose connector for Midea (or allegedly Comfee brand in Europe) portable air conditioners. The female connector slots in to the AC unit, and the male connector screws on to a generic 5.9" portable AC hose.

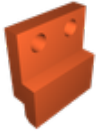
I personally needed one of these in order to convert my Midea portable AC to a two-hose unit to improve its efficiency. A bracket for connecting a hose to the AC air intake was available on [here](#) on thingiverse, but the male/female hose connectors I was able to find worked poorly, so I made these.

I recommend using two M3 screws & nuts as shown in the pictures for connecting the small “nub” to the female connector securely, but glue or a soldering iron can also potentially work.

I recommend using PETG for printing this as you need the “tabs” on the female connector to be flexible, and this part can potentially get hot if

you're using it on the exhaust side of the AC.
Supports are required on the female connector to hold the ends of the “tabs” up. An example is provided in the pictures.

Model files



ac-female-connector-nub.stl



ac-female-connector.stl



ac-male-connector.stl

License ©



This work is licensed under a
[Creative Commons \(4.0 International License\)](https://creativecommons.org/licenses/by-nc-sa/4.0/)

Attribution—Noncommercial—Share Alike

- ✗ | Sharing without ATTRIBUTION
- ✓ | Remix Culture allowed
- ✗ | Commercial Use
- ✗ | Free Cultural Works
- ✗ | Meets Open Definition