

## sovol rail spool holder



crashidaho

[VIEW IN BROWSER](#)

updated 13. 7. 2024 | published 13. 7. 2024

### Summary

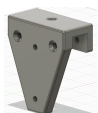
sv06+ -compact

[3D Printers](#) > [Other Printer Parts & Upgrades](#)

Tags: [spoolholder](#) [filamentpoolholder](#) [filamentpool](#)  
[filamentholder](#) [sovol](#) [sv06](#) [sovolsv06](#) [sv06sovol](#)  
[sv06plus](#) [sovolsv06plus](#)

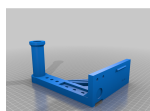
0.2m, infil 60, support tree, orca slicer

### This remix is based on



**Hanging Spool Support for 2020 Extrusion**

by cdthomas9



**Anycubic Kobra Plus Top Mount Filament Holder**

by Kasel

# Model files



**sovol-rail-spool-holder-enclosure-v1.3mf**



**sovol-rail-spool-holder-enclosure.stl**

## License

This work is licensed under a  
[Creative Commons \(4.0 International License\)](https://creativecommons.org/licenses/by-sa/4.0/)



**Attribution-ShareAlike**

- 
- ✗ | Sharing without ATTRIBUTION
  - ✓ | Remix Culture allowed
  - ✓ | Commercial Use
  - ✓ | Free Cultural Works
  - ✓ | Meets Open Definition