

## Sy's Peglock - parametric bin



Allen Robinson

[VIEW IN BROWSER](#)

updated 15. 7. 2024 | published 15. 7. 2024

### Summary

A configurable bin for Sy's Peglock

[Hobby & Makers](#) > [Organizers](#)

Tags: [organization](#) [pegboard](#)

A configurable bin for Sy's Peglock. The bin's dimensions and wall thickness are configurable. There is a single mount point that is always centered along the bottom edge of the back face.

Source: <https://cad.onshape.com/documents/2ed266f48306aff8d8bbe25a/w/8d7a74918cdf6debdcd61c1b/e/0b3310812ca8cc9d56f22986?renderMode=0&rightPanel=variableTablePanel&uiState=6692b5596331925a54d9a897>

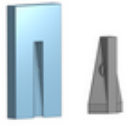
I attached one bin size. Comment if you'd like other sizes generated.

### This remix is based on



**Sy's Peglock - Locking Pegboard System**

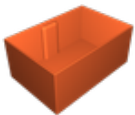
by StellasFun



## Sy's Peglock - Template Plate Versions plus Onshape CAD

by Labrat\_1023

## Model files



sy\_peglock\_bin\_150x100x65.stl

## License

This work is licensed under a  
[Creative Commons \(4.0 International License\)](#)



**Attribution-ShareAlike**

- 
- ✗ | Sharing without ATTRIBUTION
  - ✓ | Remix Culture allowed
  - ✓ | Commercial Use
  - ✓ | Free Cultural Works
  - ✓ | Meets Open Definition