



608ZZ Bearing bolt, bushing and casing assembly

 **EDGeProjects**

[VIEW IN BROWSER](#)

updated 13. 7. 2024 | published 13. 7. 2024

Summary

608ZZ Bearing bolt, bushing and casing assembly

[Hobby & Makers](#) > [Mechanical Parts](#)

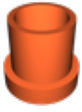
Tags: [bearing](#) [bearingholder](#) [6mm](#)

608ZZ Bearing bolt, bushing and casing assembly with template for integration into other stl's. Take the template, use Boolean to merge the template into the other part of the model you are working with and then print 2 casings, 1 bushing and 1 bolt.

I designed this to work with a 20mm shaft as well. The pictures use a black bolt as a mock up for the assembly, but a final assembly attached to a linear actuator for what I designed this for.

Order of assembly is seat two 608ZZ bearings in the casings which is a tight press fit, then take the bolt, slide the first bearing with the open side of the casing facing the bolt head to the end, slide the bolt onto whatever you need the assembly to work with (linear actuator for me), slide the second bearing with the closed side of the casing facing your device being attached to, slide a bushing, mushroom cap facing out into the bearing over the bolt and finally, screw the bolt to your models stl that you use the template to integrate into. My sample pics are just a basic block, but I'll merge the template into the larger stl prop later.

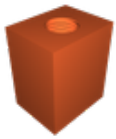
Model files



608zzsecondarybushing.stl



608zzbearingcasing.stl



608zzboltshafttemplate6mm.stl



608zzboltintegratedbushing.stl

License ©



This work is licensed under a
[Creative Commons \(4.0 International License\)](#)

Attribution—Noncommercial—Share Alike

- ✗ | Sharing without ATTRIBUTION
- ✓ | Remix Culture allowed
- ✗ | Commercial Use
- ✗ | Free Cultural Works
- ✗ | Meets Open Definition