

Magnetic Nespresso capsule wall holder



franciscorp

[VIEW IN BROWSER](#)

updated 12. 4. 2022 | published 17. 12. 2021

Summary

This is an alteration of the Nespresso Capsule Holder to support magnetic attachment. I also did an adjustment to the...

[Household](#) > [Kitchen](#)

Tags: [wall](#) [holder](#) [magnet](#) [magnetic](#) [coffee](#) [capsule](#)
[nespresso](#) [capsuleholder](#)

This is an alteration of pumikachu's [Nespresso capsule wall holder light](#) to support magnetic attachment.

I also did an adjustment to the bottom part for ease capsule release. Designed to use neodymium magnets with 6mm diameter and 1.5mm height (8 pieces for each support [search the web](#)).

Make sure to use neodymium magnets, other magnets may not be so strong and make the support slippery.

Changes:

- Updated the source file to FreeCAD 0.17 with little changes.

Print Settings

Rafts:

Doesn't Matter

Supports:

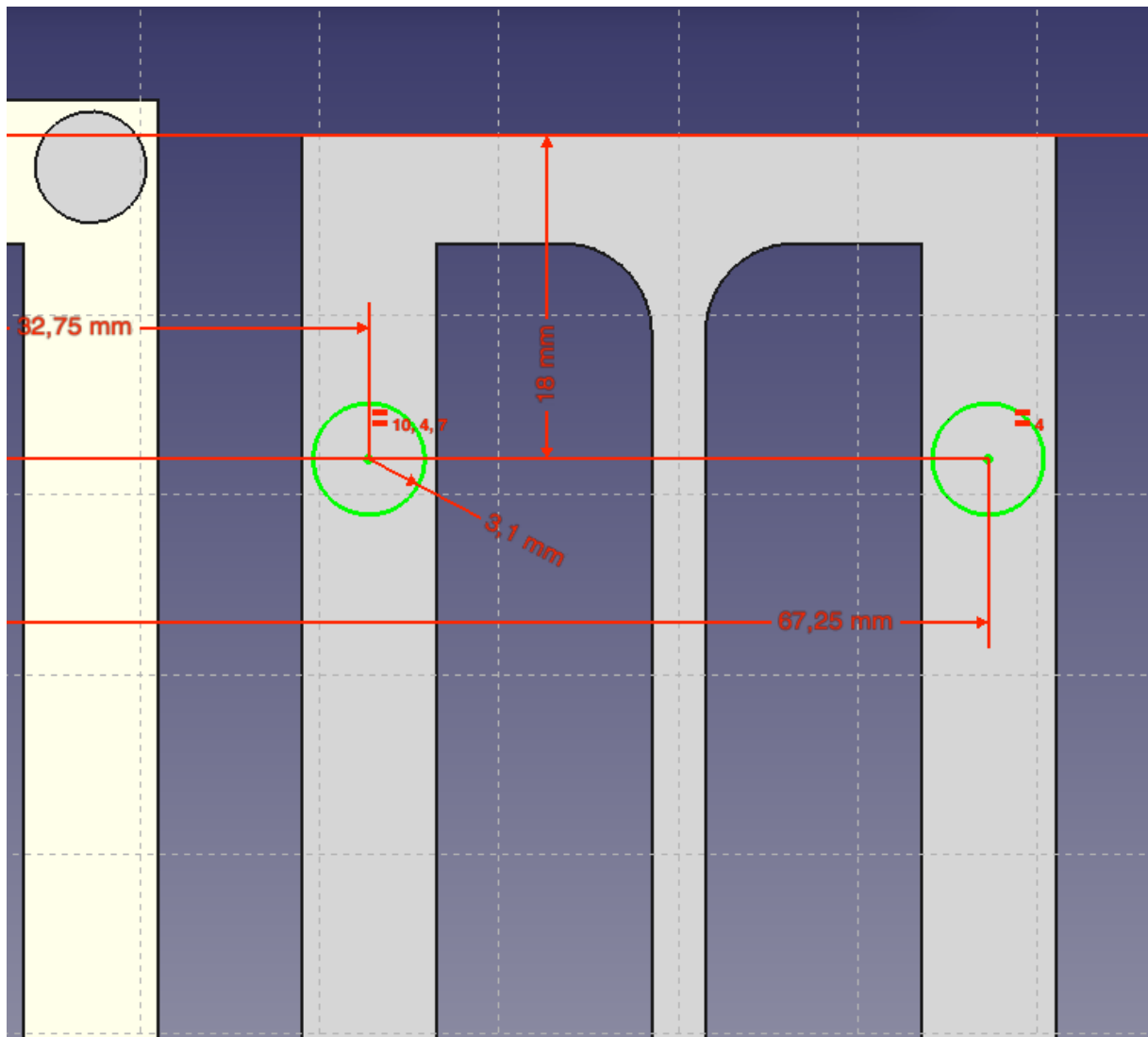
No

****Resolution:**** 0.2mm

Infill:

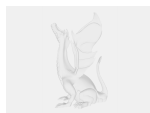
20%

Post-Printing ===== After printing, just glue the magnets, they should be a tight fit. I used superglue, but had to wait for a couple hours for them to stick. I think there should be better glues for this. How I Designed This ===== I made this alterations using [FreeCAD](<https://www.freecadweb.org/>) and you can edit it's file to suit your needs. As an example you can easily change the size of the magnet holes and it's placement by directly changing "BtMagnetHolesSketch" and "TpMagnetHolesSketch" (I recomend you to do a Part/Refine after your changes, before exporting it to .stl).

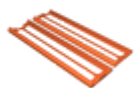


Category: Kitchen & Dining

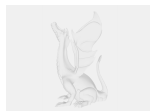
Model files



magnetic_capsule_holder-fc017.fcstd



magnetic_capsule_holder.stl



magnetic_capsule_holder.fcstd

License ©

This work is licensed under a
Creative Commons (4.0 International License)



Attribution—Noncommercial—Share Alike

- ✗ | Sharing without ATTRIBUTION
- ✓ | Remix Culture allowed
- ✗ | Commercial Use
- ✗ | Free Cultural Works
- ✗ | Meets Open Definition