

## VW Golf / Passat / Polo (3) GT & GTI Badge + Grill holder



C\_Cheetos

[VIEW IN BROWSER](#)

updated 12. 4. 2022 | published 17. 12. 2021

### Summary

EDIT: because of this things recent popularity, i added an OEM scale GTI badge to the thing files, to save you the...

---

[Hobby & Makers](#) > [Automotive](#)

---

EDIT: because of this things recent popularity, i added an OEM scale GTI badge to the thing files, to save you the hassle of scaling it up. :)

--This is the mk4 and up OEM scale, if people need it, i will model the mk3 logo as well--

I lost my GTI Badge for my Volkswagen golf mk3 so instead of buying a new one i printed one, i used Loco's Volkswagen GTI Key-chain as my base and cut a few thing off. of course the size is not correct, this needs to be scaled to x1.4 for all the badges, this matches the OEM size of the original GTI badge.

The grill holder i designed myself, just use 2 normal wood screws to get it in place (no you do not have to destroy your bumper for this). alternatively you could use m4 or m5 bolts with lock nuts.

the grill-holder is the correct sizing no need to scale that.

i printed in PLA at 0.2 layer height and 30% infill, your mileage may vary.

The 2 components are printed separately, use clear kit or super glue to stick them together, works like charm for me.

## Print Settings

### Printer Brand:

Solidoodle

### Printer:

Solidoodle 2 - Base

### Rafts:

No

### Supports:

No

### Resolution:

0.2 Layer Heigt

### Infill:

30%

### Notes:

set speed to pretty low, also my solidoodle is modded with an e3d hottend, lawsy's replacement carriages, an actively cooled nema 17 mod and active filament cooling.

not sure if it prints fine on unmodded solidoodles

Category: Automotive

## Model files



gti\_badge.stl

---



**vw\_grill\_holder\_chester.sldprt**

---



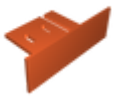
**gti\_badge\_oem\_scale.stl**

---



**gti\_badge.sldprt**

---



**vw\_grill\_holder\_chester.stl**

---



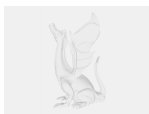
**gt\_badge.stl**

---



**gt\_badge.sldprt**

## Other files



**sources.txt**

[Find source .stl files on Thingiverse.com](#)

## License ©

This work is licensed under a  
**Creative Commons (4.0 International License)**



## Attribution

---

- ✘ | Sharing without ATTRIBUTION
- ✓ | Remix Culture allowed
- ✓ | Commercial Use
- ✓ | Free Cultural Works
- ✓ | Meets Open Definition