

Hoymiles HM - 300 /350/400 Wallmount



x3me

[VIEW IN BROWSER](#)

updated 26. 7. 2024 | published 26. 7. 2024

Summary

Wallmount option for Hoymile HM300/350/400. Best for mounting to a brick or concrete wall as the inverter gets warm

[Household](#) > [Other House Equipment](#)

Tags: [solar](#) [inverter](#) [hoymiles](#)

As I don't use my Inverter directly from the panel but rather to power it from a battery I can't use the intended mounting options (if you want to call it that)

Instead of using some makeshift solution with washers ive sat down to create a proper mounting option

The design is intended to align with the screws sticking out of the back of the inverter to not create a pressure point in the plastic but rather to distribute evenly.

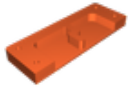
As the nature of the core design is press to fit, the tolerances are very very tight.

Attempt with low filament usage settings and only proceed if this fits.

In order to make it sturdy, please make sure to use enough perimeters and a higher infill

Mine has 6 perimeters with 30 % infill in PETG

Model files



wallmount-hm-300350400.stl

License ©

This work is licensed under a
Creative Commons (4.0 International License)



-
- × | Sharing without **ATTRIBUTION**
 - × | Remix Culture allowed
 - × | Commercial Use
 - × | Free Cultural Works
 - × | Meets Open Definition