



# Google Chromecast holder



Joakim Schütt

[VIEW IN BROWSER](#)

updated 26. 7. 2024 | published 26. 7. 2024

## Summary

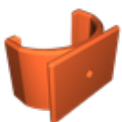
A holder suitable for Biltema and Julas pegboard in metal.

[Hobby & Makers](#) > [Other Ideas](#)

Tags: [chromecast](#)

I wanted a sure place for my Google Chromecast remote in the garage. This is the result of my wish. Feel free to use and improve upon it!

## Model files



google-hallare\_biltema.stl

# License $\Theta$

This work is licensed under a  
**Creative Commons (4.0 International License)**



## Attribution

---

- ✗ | Sharing without ATTRIBUTION
- ✓ | Remix Culture allowed
- ✓ | Commercial Use
- ✓ | Free Cultural Works
- ✓ | Meets Open Definition