



Dinosaur egg(generated by revopoint pop)



PLAprinter

[VIEW IN BROWSER](#)

updated 12. 4. 2022 | published 17. 12. 2021

Summary

This dinosaur egg model was made by Revopoint POP. If you want to get more models like this, please try to use 3D...

[World & Scans](#) > [People](#)

Tags: dinosaur

This dinosaur egg model was made by Revopoint POP. If you want to get more models like this, please try to use 3D scanner POP: <https://bit.ly/3xb37c3>

Print Settings

Printer Brand:

Creality

Printer:

Ender 3

Rafts:

No

Supports:

No

Resolution:

200

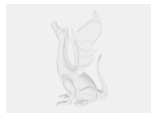
Infill:

38

Filament:

PolyMaker PETG Category: Scans & Replicas

Model files



_color.obj

[Find source .stl files on Thingiverse.com](#)

License ©

This work is licensed under a
Creative Commons (4.0 International License)



Attribution—Noncommercial—Share Alike

-
- ✗ | Sharing without ATTRIBUTION
 - ✓ | Remix Culture allowed
 - ✗ | Commercial Use
 - ✗ | Free Cultural Works
 - ✗ | Meets Open Definition