

Meshlicious Front Panel Expansion Mod (Tool-Less)



Dreoni

[VIEW IN BROWSER](#)

updated 19. 8. 2024 | published 19. 8. 2024

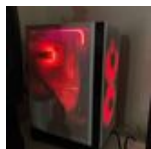
Summary

32mm Front panel expansion to move the 140mm fans to the outside of the Meshlicious

[Gadgets](#) > [Computers](#)

Tags: [sffpc](#) [meshlicious](#) [ssupd](#) [ssupdmod](#)

This remix is based on



SSUPD Meshlicious Front Panel Extension

by EddieCoast

Model files



tool-less_mesh_front_extension_channels_half_32mm.stl

License



This work is licensed under a
[Creative Commons \(4.0 International License\)](https://creativecommons.org/licenses/by-nc-sa/4.0/)

Attribution—Noncommercial—Share Alike

-
- ✗ | Sharing without ATTRIBUTION
 - ✓ | Remix Culture allowed
 - ✗ | Commercial Use
 - ✗ | Free Cultural Works
 - ✗ | Meets Open Definition