

HDPlex 500W PSU Adapter for Jonsbo N3 Case

B Bobbio

[VIEW IN BROWSER](#)

updated 27. 7. 2024 | published 27. 7. 2024

Summary

Adapter for HDPlex 500W PSU to be used in N3 Case

[Gadgets](#) > [Computers](#)

Tags: [powersupply](#) [nosupport](#) [powersupplymount](#)

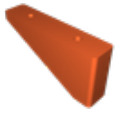
PSU Adapter for **HDPlex ATX 500W PSU**. The adapter raises the PSU to allow clearance for the front IO daughterboard and certain motherboards with plugs coming out of the side. Uses 4x M3x8mm bolts to mount to the PSU because I don't have M2.5 bolts.

The rear mount on the output side of the PSU shows in the assembly picture is in the wrong direction, just rotate it by 180 when installing to avoid interference with the front IO board.

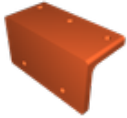
Model files

[psu-mount-rear.sldprt](#)

psu-mount-front.sldprt



psu-mount-rear.3mf



psu-mount-front.3mf

psu-mount-rear.step

sfx-psu-mount-front.step

License

This work is licensed under a
[Creative Commons \(4.0 International License\)](#)

[Attribution](#)

- ✗ | Sharing without ATTRIBUTION
- ✓ | Remix Culture allowed
- ✓ | Commercial Use
- ✓ | Free Cultural Works
- ✓ | Meets Open Definition