

Qidi 6.08 Mono build plate

N Nikdfish

VIEW IN BROWSER

updated 12. 4. 2022 | published 18. 12. 2021

Summary

DIY version of a Qidi 6.08 Mono resin printer build plate, requiring an adhesive magnetic flex plate kit for function

[3D Printers](#) > [3D Printers - Upgrades](#)

Tags: [qidi](#)

NOTE: I have not yet tested this in use. I have not compared the assembly height with adhesive based magnetic flex plate installed. You would definitely need to relevel the build plate before use. Adjustment of home position sensing via a shim may be necessary.

This is a DIY version of the build plate for the Qidi 6.08 Mono resin printer. It would require the addition of a magnetic flexible build plate kit to be functional. A possible kit choice might be one of these: <https://www.amazon.com/DP/B08V8QCKYF> (or similar) in the 140x84mm size. The model has actual plate bottom dimensions of 140x87mm.

3mm threaded inserts and 3mm cap head screws are used for assembly. The two screws on the back side of the head socket are tightened to apply pressure to the build plate ball mount once the plate is properly leveled. These screws need to be loosened slightly prior to leveling.

I'd suggest using 100% infill for the ball and the region immediately below. The remainder of the parts are fine at 20%. Use a high wall count (6+?) to

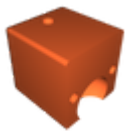
provide a good grip area for the threaded inserts. Holes will probably need to be chased with a properly sized drill bit, for 3mm screws, inserts and top thumbscrew.

The two part head socket was printed with the ball socket uppermost. Supports were used for the square opening. Be sure to use supports settings that permit easy/complete support removal.

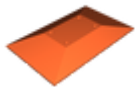
source files on Tinkercad <https://www.tinkercad.com/things/25iEYzlRqLt>

Category: 3D Printer Parts

Model files



qidi-608-build-platec.stl



qidi-608-build-platea.stl



qidi-608-build-plated.stl



qidi-608-build-plateb.stl

[Find source .stl files on Thingiverse.com](https://www.thingiverse.com)

License ©

This work is licensed under a
[Creative Commons \(4.0 International License\)](https://creativecommons.org/licenses/by-nc-sa/4.0/)



Attribution—Noncommercial—Share Alike

- ✗ | Sharing without ATTRIBUTION
- ✓ | Remix Culture allowed
- ✗ | Commercial Use
- ✗ | Free Cultural Works
- ✗ | Meets Open Definition