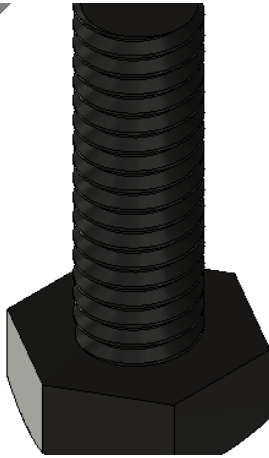


3D MODEL ONLY



# Parametric M4 Hex Head Screw



Chris Erno

[VIEW IN BROWSER](#)

updated 5. 8. 2024 | published 5. 8. 2024

## Summary

Model By Default is M4x12 Includes Fusion 360 File To Adjust Screw Height

[Hobby & Makers](#) > [Tools](#)

Tags: [parametric](#) [screws](#) [m4](#) [parametricdesign](#) [m4screw](#)  
[hexheadscrew](#) [m4hex](#)

Model By Default is M4x12

Includes Fusion 360 File To Adjust Screw Height

## Model files

[parametric-m4-hex-head-screw.f3d](#)



[m4x12-hex-head-screw.stl](#)

# License ©

This work is licensed under a  
[Creative Commons \(4.0 International License\)](#)



- 
- ✗ | Sharing without ATTRIBUTION
  - ✗ | Remix Culture allowed
  - ✗ | Commercial Use
  - ✗ | Free Cultural Works
  - ✗ | Meets Open Definition