

worklight mounts for 1025R & 3038e John Deere Tractors

N Nikdfish

[VIEW IN BROWSER](#)

updated 12. 4. 2022 | published 17. 12. 2021

Summary

Two worklight mounts. One for attachment to the grab handle on a 3038e and one to allow replacement of the original...

[Household](#) > [Outdoor & Garden](#)

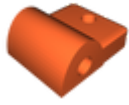
Two worklight mounts. One for attachment to the grab handle on a 3038e and one to allow replacement of the original Hella worklight on a 1025R with some other type of worklight.

The 3038e mount screw pockets were designed for use with 3mm cap head screws and heat embedded threaded inserts. A high density infill should be used on the screw pocket areas of the 3038e mount and the light mount portions of the of both mounts. 95a TPU was the material used in the actual prints.

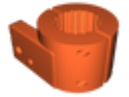
This object was made in Tinkercad. Edit it online <https://www.tinkercad.com/things/h21fF28f4cG>

Category: Outdoor & Garden

Model files



worklight_mount_1025r.stl



worklight_mount_3038e.stl

[Find source .stl files on Thingiverse.com](#)

License

This work is licensed under a
Creative Commons (4.0 International License)



Attribution-ShareAlike

-
- ✗ | Sharing without ATTRIBUTION
 - ✓ | Remix Culture allowed
 - ✓ | Commercial Use
 - ✓ | Free Cultural Works
 - ✓ | Meets Open Definition