



UMSS - Prusa Tools and Accessories



Jorge

[VIEW IN BROWSER](#)

updated 22. 8. 2024 | published 22. 8. 2024

Summary

Universal Modular Storage System for tools and accessories. Min. tile of 150x150, with box for Tools & Accessories.

[3D Printers](#) > [Accessories](#)

Tags: [prusa](#) [hexagon](#) [modular](#) [pliers](#) [lubrication](#) [tools](#)
[keys](#) [screwdriver](#) [pliersholder](#) [mk4](#) [modularity](#)

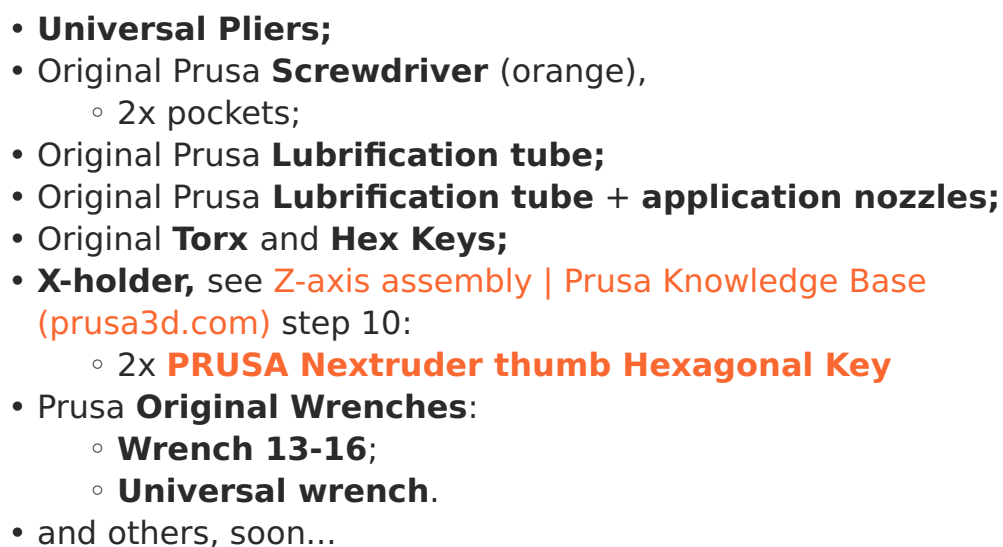
Description

Disclaimer: These and other models are available to all "my club" members starting at \$5 per month, as well as for one-time purchase. Your support helps sustain the development efforts and the acquisition of modules. Thank you very much!

Introduction

These modules are part of the **UMSS** project, so you have to start their... The project should therefore start there, with the creation and integration of tiles, eventually creating boxes and other items. These "containers" will hold these modules, which serve various purposes. In this case, they are tools and accessories that are available to all printers.

What can be found here, tools and accessories:



The **Cut Pliers** can be found on **this module pack with other tools.**

			
Prusa Original wrenches	X-Holder and Thumb Hexagonal key for hotend fast remove	Original Prusa Screwdriver	Torx and Hex Keys
			
Lubrification tube	Lubrification tube + application nozzles	Universal Pliers	

... and a special Box that is tailored for the Mk series print area.



The lid and label are available within this project, and the box wall can be found in the project's root area: [UMSS - Universal Modular Storage System](#). As you may already know, this system can be beneficial for various 3D printer brands.



Printing

Regarding printing, everything is quite simple as everything is pre-configured. You will find modules with pockets for magnets of 6.1 and 6.2mm. Choose the dimension that best suits your needs, keeping in mind that various factors can cause the magnet to not fit properly or be too loose. The magnet should fit with some pressure and then should not come out; if it does, use a small amount of glue at the base of the pocket. For more information on this, please visit the main page of this project here: [UMSS - Universal Modular Storage System](#).

Some parts may have a pause, or more, during to print to insert a internal magnet. Be careful with the orientation, the objective is for the magnet to attract the tool. Modules with pauses:

-

Parts with more than one color without MMU

I know that most of you won't have an MMU, but consider getting one, as it is well worth it, and this latest version, the MMU3, works perfectly! Let's just say it's nothing like it used to be...

However, if you want to print any parts that contain multiple colors, you have a few options:

- Remove the bodies that will be printed with other colors. In this case, you will achieve an emboss effect that also works well.
- Print with multiple colors by manually changing the filament. The parts have been designed to minimize the number of material changes... The manual process is documented on the [Prusa forum](#), Youtube etc , so I won't go into detail here. Since there are only two layers, you will change the material only four times.
- Use a Boolean addition operation to combine all the bodies, so there will be no traces of the graphic elements where I usually apply other colors. I would say this is the least interesting option.
 - I don't know if that is possible on Prusa Slicer, but it's a straight forward operation on Bambu Studio or Orca Slicer, after doing that operation export the part to STL back to Prusa Slicer, or print directly from the previous slicer, that's possible too.

Tags



These tags serve two purposes:

- the obvious one is to identify the pieces and relate them to a Bill of Materials (BOM) found on the back of the lid.
- Additionally, they allow you to lift the modules if needed, so think of them as handles.

For the best results when printing Tags and other small elements, a **0.2mm nozzle** is recommended. This nozzle is an essential accessory of your printer and opens up many possibilities. I highly recommend it!

(4) - cut pliers is part of the **UMSS - General Tools**

Additional modules

In addition to the modules presented here, you may add others, but they are available separately to keep everything organized. For members of the 'my club,' access is direct.

UMSS Boxes with lid



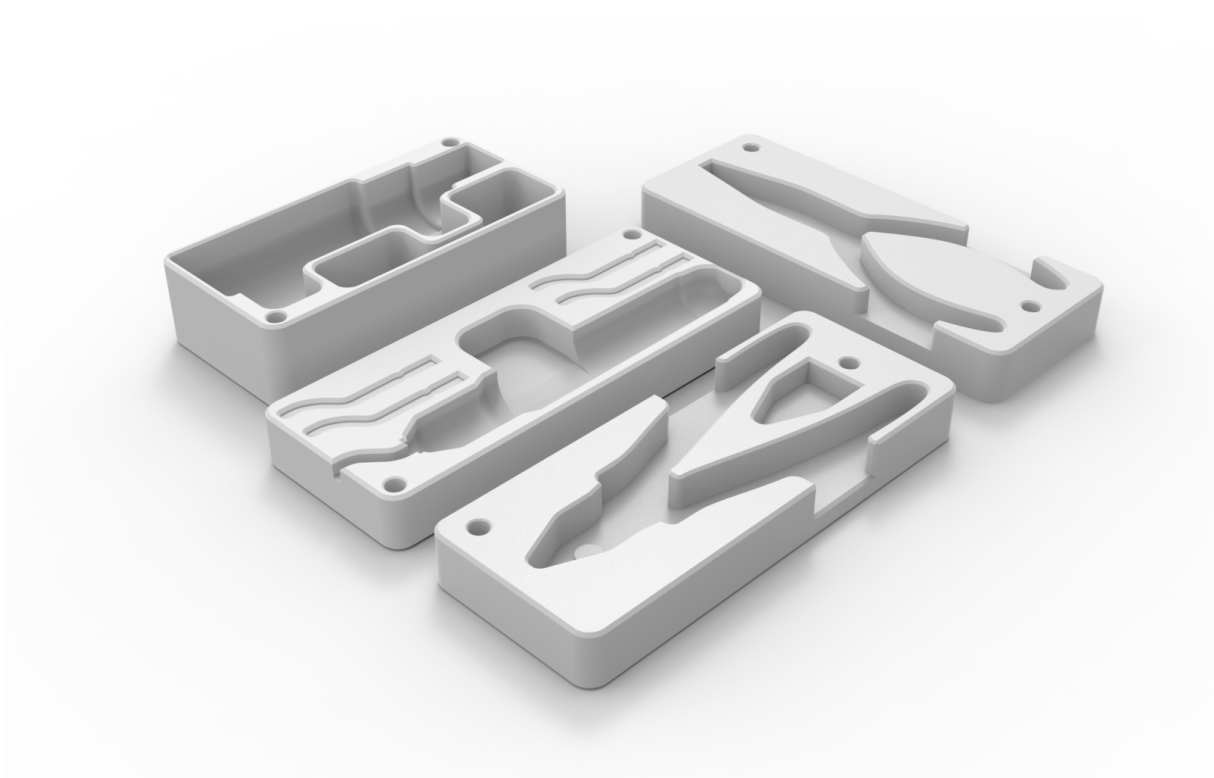
UMSS Box modules available:

- 5x3 Box - External dimensions approx. 150x90mm and approx. 144x83mm
- 5x2 Box - External dimensions approx. 150x60mm and approx. 144x53mm
- 4x3 Box - External dimensions approx. 120x90mm and approx. 114x83mm
- 4x2 Box - External dimensions approx. 120x60mm and approx. 114x53mm

- 3x2 Box - External dimensions approx. 90x60mm and approx. 84x53mm
- 3x1 Box - External dimensions approx. 90x30mm and approx. 84x23mm
- 2x1 Box - External dimensions approx. 60x30mm and approx. 54x23mm
- more to come soon...

You can get them here: [UMSS - Boxes with Lid by Jorge](#)

UMSS General tools



- 1x **universal pliers**;
- 1x **cut pliers**;
- 1x **spray bottle for IPA "Isopropyl Alcohol" (50ml)** and **cleaning wipe**;
- 1x **deburring tool**;
- more to come...

You can get them here: [UMSS - General Tools](#)

And a couple of examples of integration:



Support the designer:

This design is free for the benefit of the community, but If you like my designs and want to contribute, you can make a donation to [buymeacoffee](#) or [paypal](#), or even better, join “My Club” here in [printables.com](#), that will be greatly appreciated.

Model files



Lid and Label for the BOX

2 files



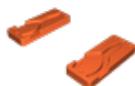
tools-and-accessories-lid.3mf

☐ 180x210 Box Lid with label (Prusa Slicer) - MMU Version



tools-and-accessories-label-only.3mf

☐ Label for the front of the box - 2 versions

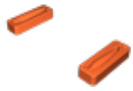


universal-pliers-prusaslicer.3mf

☐ Prusa Slicer Ready to print file

universal-pliers.3mf

☐ Bambu Studio Ready to print file



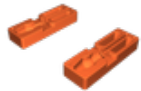
prusa-lubrication-tube.3mf

☐ Prusa Slicer Ready to print file



lubrication-kit.3mf

☐ Prusa Slicer Ready to print file



prusa_screwdriver.3mf

☐ Prusa Slicer Ready to print file



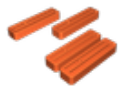
torx-and-hex-keys.3mf

☐ Prusa Slicer Ready to print file



x-holder-thumb-hexagonal-key.3mf

☐ Prusa Slicer Ready to print file



special-hex-keys.3mf

☐ Prusa Slicer Ready to print file, with and without MMU

License

This work is licensed under a
Creative Commons (4.0 International License)



Attribution—Noncommercial—No Derivatives

- ✗ | Sharing without ATTRIBUTION
- ✗ | Remix Culture allowed
- ✗ | Commercial Use
- ✗ | Free Cultural Works
- ✗ | Meets Open Definition

