

# Elegoo Neptune 3 - Z-Axis Camera Mount



Cameron Walcott

[VIEW IN BROWSER](#)

updated 5. 8. 2024 | published 5. 8. 2024

## Summary

Camera mount for the Elegoo Neptune 3. Included M5 thumb nuts, and 1/4-20 thumb screw for installation

---

[3D Printers](#) > [Other Printer Parts & Upgrades](#)

---

## This remix is based on



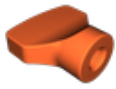
Neptune 3/4 Plus\_Max Z-Axis Camera Mount  
by Guvner76

## Model files



camera-mount.stl

---



**mounting-nut.stl**

|| McMaster-Carr PN: 97080A120



**camera-screw.stl**

|| McMaster-Carr PN: 91185A917 w/ 0.8mm spacer

## License

This work is licensed under a  
**Creative Commons (4.0 International License)**

**Attribution-NonCommercial**

- ✗ | Sharing without ATTRIBUTION
- ✓ | Remix Culture allowed
- ✗ | Commercial Use
- ✗ | Free Cultural Works
- ✗ | Meets Open Definition