

Centrifugal Air Blower



kjt270000

[VIEW IN BROWSER](#)

updated 12. 8. 2024 | published 12. 8. 2024

Summary

Simple centrifugal air blower design that supports brushed DC motors with a 2mm shaft.

[Hobby & Makers](#) > [Tools](#)

Tags: [motor](#) [dc](#) [air](#) [turbine](#) [blower](#) [simple](#) [centrifugal](#)

Motors can be mounted to the blower using M3 screws or glue. The screw holes are designed for motors with a diameter of 24mm.

The top part of the blower can be just clipped into place but i would recommend gluing it in to prevent any air leaks.

All parts can be printed in PLA without any supports.

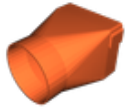
Model files

blower_main.stl

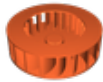




blower_top.stl



blower_nozzle.stl



blower_turbine.stl

License

This work is licensed under a
Creative Commons (4.0 International License)

Attribution

- ✗ | Sharing without **ATtribution**
- ✓ | Remix Culture allowed
- ✓ | Commercial Use
- ✓ | Free Cultural Works
- ✓ | Meets Open Definition